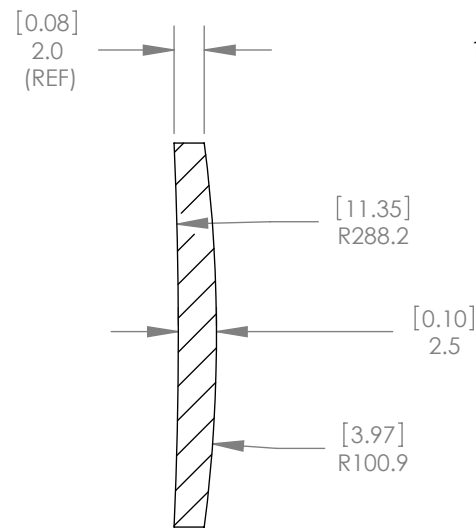
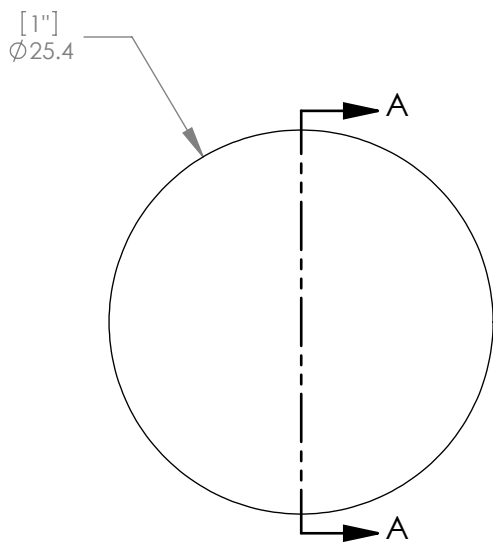




1:1 ISOMETRIC VIEW FOR REFERENCE ONLY



SECTION A-A

NOTES/SPECIFICATIONS:

1. DESIGN WAVELENGTH: 587.6nm
2. FOCAL LENGTH:  $f=299.0\text{mm} \pm 1\%$
3. BACK FOCAL LENGTH(REF):  $bf=296.5\text{mm}$
4. CLEAR APERTURE:  $>90\%$
5. SURFACE QUALITY: 40-20 SCRATCH-DIG
6. CENTRATION:  $<3\text{arcmin}$
7. DIAMETER TOLERANCE:  $+0.0/-0.1\text{mm}$
8. THICKNESS TOLERANCE:  $\pm 0.1\text{mm}$

ALL DIMENSIONS ARE IN THE FORM  $\frac{[in]}{mm}$   
 THIS DRAWING IS FOR INFORMATION ONLY  
 NOT INTENDED FOR MANUFACTURING

**THORLABS INC.** PO BOX 366  
 NEWTON NJ

	NAME	DATE
DRAWN	WD	11/19/2009
ENG APPR.	BW	11/24/2009
MFG APPR.	DD	12/09/2009

TITLE: D=25.4 F=300.0 N-BK7 +  
 MENISCUS LENS

**PROPRIETARY AND CONFIDENTIAL**  
 THE INFORMATION CONTAINED IN THIS  
 DRAWING IS THE SOLE PROPERTY OF  
 THORLABS, INC. ANY REPRODUCTION  
 IN PART OR AS A WHOLE WITHOUT  
 THE WRITTEN PERMISSION OF  
 THORLABS, INC. IS PROHIBITED.

MATERIAL: N-BK7

SIZE A	REV. B
-----------	-----------

SCALE: 2:1 SHEET 1 OF 1

DWG. NO. 3456-E01	PART NO. LE1929
----------------------	--------------------