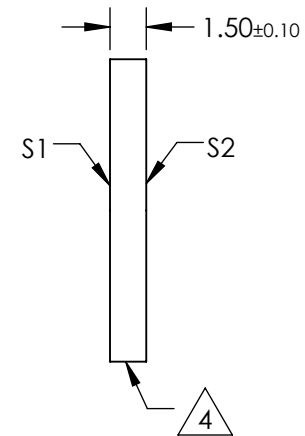
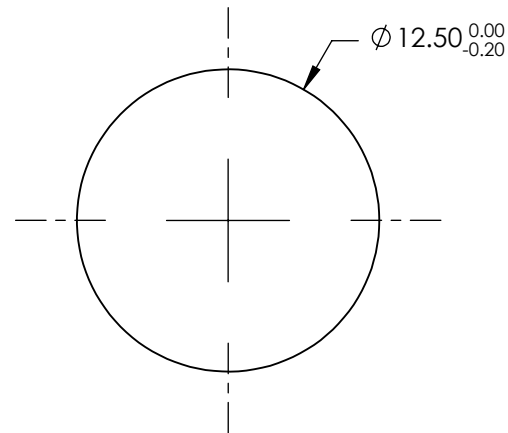
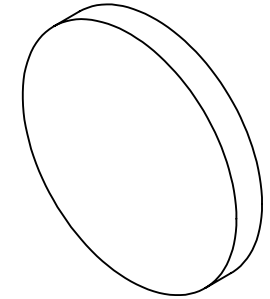


NOTES:

1. SUBSTRATE:UV GRADE FUSED SILICA
2. COATING (APPLY ACROSS CLEAR APERTURE)  
S1 & S2: R(AVG) <0.5% @ 350 - 700nm
3. SURFACE S2 TO BE PARALLEL WITH S1 TO <5 ARCSEC

 FINE GRIND SURFACE

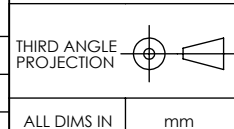
5. RoHS COMPLIANT



**FOR INFORMATION ONLY:  
DO NOT MANUFACTURE  
PARTS TO THIS DRAWING**

SPECIFICATIONS SUBJECT TO CHANGE WITHOUT NOTICE  
DIMENSIONS ARE FOR REFERENCE ONLY

	S1	S2
SHAPE	PLANO	PLANO
SURFACE QUALITY	20-10	20-10
CLEAR APERTURE	Ø10.00	Ø10.00
BEVEL	PROTECTIVE AS NEEDED	PROTECTIVE AS NEEDED



 **Edmund Optics®**

TITLE 12.5mm DIA., 1.5mm THICK, VIS-EXT COATED,  
λ/10 FUSED SILICA WINDOW

ALL DIMS IN mm DWG NO 13332 SHEET 1 OF 1