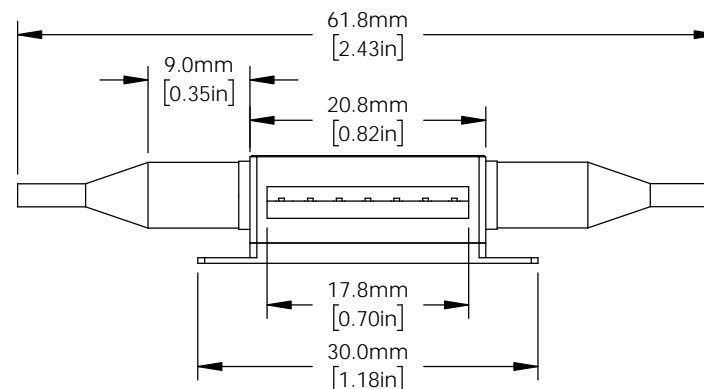
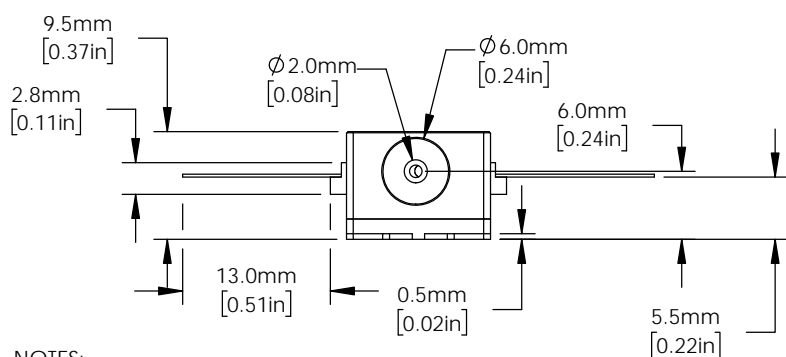
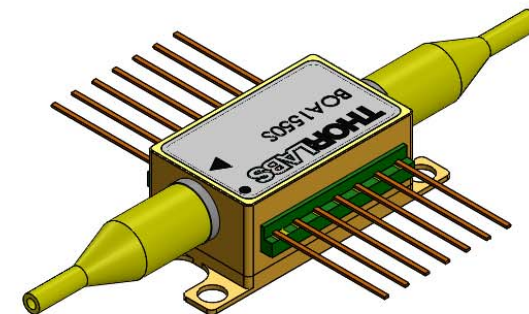


PIN IDENTIFICATION	
1. TEC +	14. TEC -
2. Thermistor	13. Case
3. NC	12. NC
4. NC	11. Dev Cathode
5. Thermistor	10. Dev Anode
6. NC	9. NC
7. NC	8. NC




NOTES:

1. THE DEVICE IS SUPPLIED WITH 2 ATTACHED FIBER TAILS.

2. FIBER TAIL DETAILS:

- LENGTH: 1.5m ± 0.1m [4.5ft ± 0.3ft]
- TERMINATION: FC/APC CONNECTORS
- FIBER TYPE: SMF28e

FOR INFORMATION ONLY
NOT FOR MANUFACTURING PURPOSES

DRAWING PROJECTION			 www.thorlabs.com	
NAME	DATE			
DRAWN	RH	15/MAR/21	BOOSTER OPTICAL AMPLIFIER 1550nm, SM FIBER	
APPROVAL	WY	16/MAR/21	MATERIAL	
COPYRIGHT © 2021 BY THORLABS			N/A	
VALUES IN PARENTHESIS ARE CALCULATED AND MAY CONTAIN ROUND OFF ERRORS			ITEM #	APPROX WEIGHT
			BOA1550S	0.025 kg