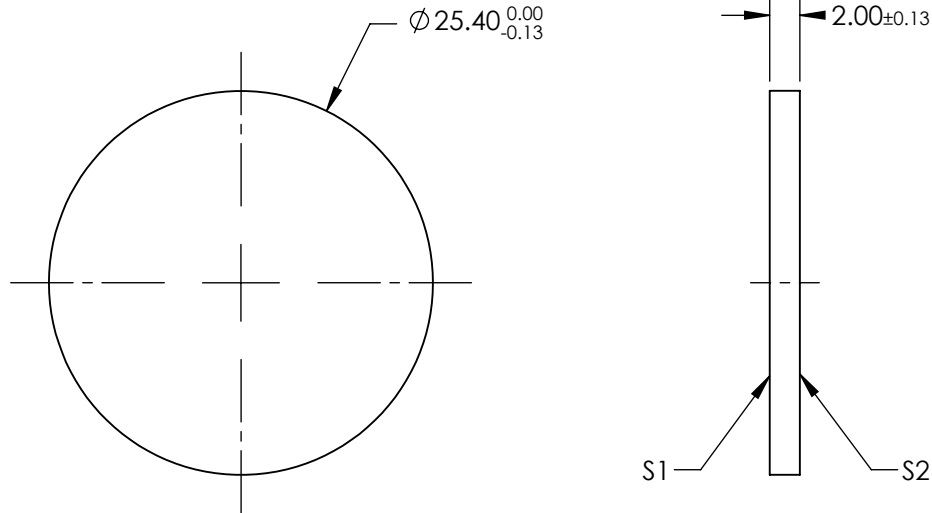


NOTES:

1. SUBSTRATE: Cadmium Telluride (CdTe)
2. SURFACE S2 TO BE PARALLEL WITH S1 TO <3 ARCMIN
3. COATING (APPLY ACROSS CLEAR APERTURE)
S1 & S2: NONE



**FOR INFORMATION ONLY:
DO NOT MANUFACTURE
PARTS TO THIS DRAWING**

SPECIFICATIONS SUBJECT TO CHANGE WITHOUT NOTICE
DIMENSIONS ARE FOR REFERENCE ONLY

	S1	S2
SHAPE	PLANO	PLANO
SURFACE QUALITY	60-40	60-40
SURFACE FLATNESS	2λ/inch @ 633nm	2λ/inch @ 633nm
CLEAR APERTURE	∅ 21.59	∅ 21.59
BEVEL	PROTECTED AS NEEDED	PROTECTED AS NEEDED

THIRD ANGLE PROJECTION

ALL DIMS IN

mm

Edmund Optics®

TITLE

25.4mm Dia., 2mm Thick, Uncoated,
Cadmium Telluride (CdTe) Window

DWG NO

16799

SHEET
1 OF 1