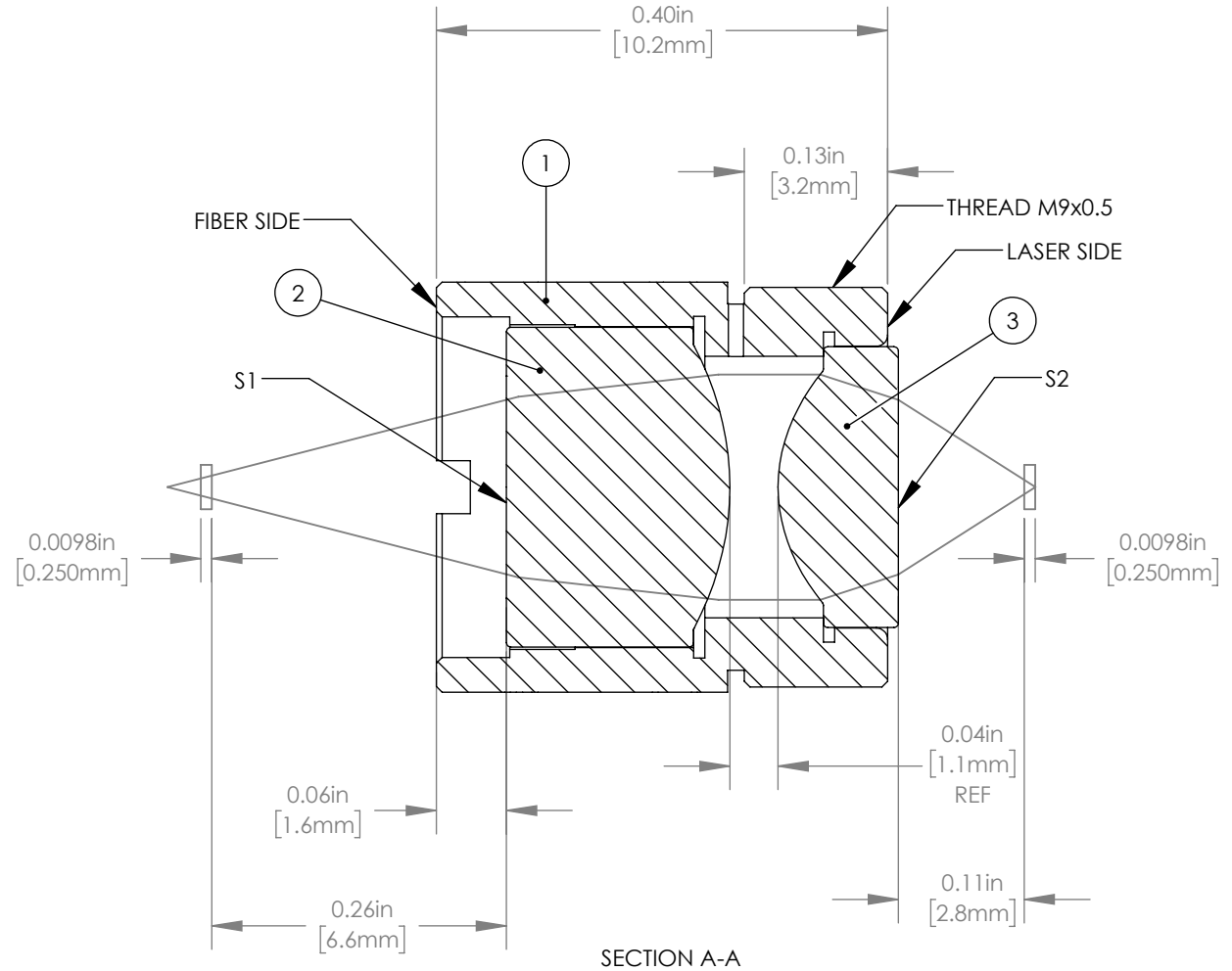
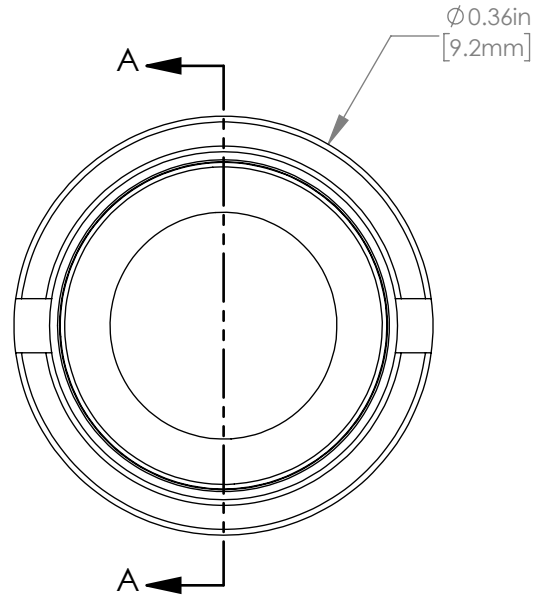


	PART	MATERIAL
①	LENS PAIR MOUNT	BLACK ANODIZED ALUMINUM
② ③	ASPHERES	-



NOTES/SPECIFICATIONS:

- FOCAL LENGTH: $f_1=11.00\text{mm}$, $f_2=4.51\text{mm}$
- DESIGN WAVELENGTH: 780nm
- CLEAR APERTURE:
(S1): $\varnothing 4.07\text{ mm}$
(S2): $\varnothing 3.93\text{ mm}$
- LASER WINDOW MATERIAL: N-BK7
WINDOW THICKNESS: 0.250mm
REFRACTIVE INDEX: 1.517
- NUMERICAL APERTURE: LASER SIDE=0.55, FIBER SIDE=0.25
- COATING: BBAR $R_{\text{avg}} < 0.5\%$ FROM 600-1050nm

FOR INFORMATION ONLY
NOT FOR MANUFACTURING PURPOSES

DRAWING PROJECTION			THORLABS www.thorlabs.com	
NAME	DATE			
DRAWN	JAC	20/JAN/21	MOUNTED ASPHERIC LENS PAIR, 0.55 NA/0.25 NA, B COATED	
APPROVAL	DD	26/JAN/21	MATERIAL	REV E
COPYRIGHT © 2021 BY THORLABS			SEE TABLE	
VALUES IN PARENTHESIS ARE CALCULATED AND MAY CONTAIN ROUND OFF ERRORS			ITEM #	APPROX WEIGHT
			C230220P-B	1 g