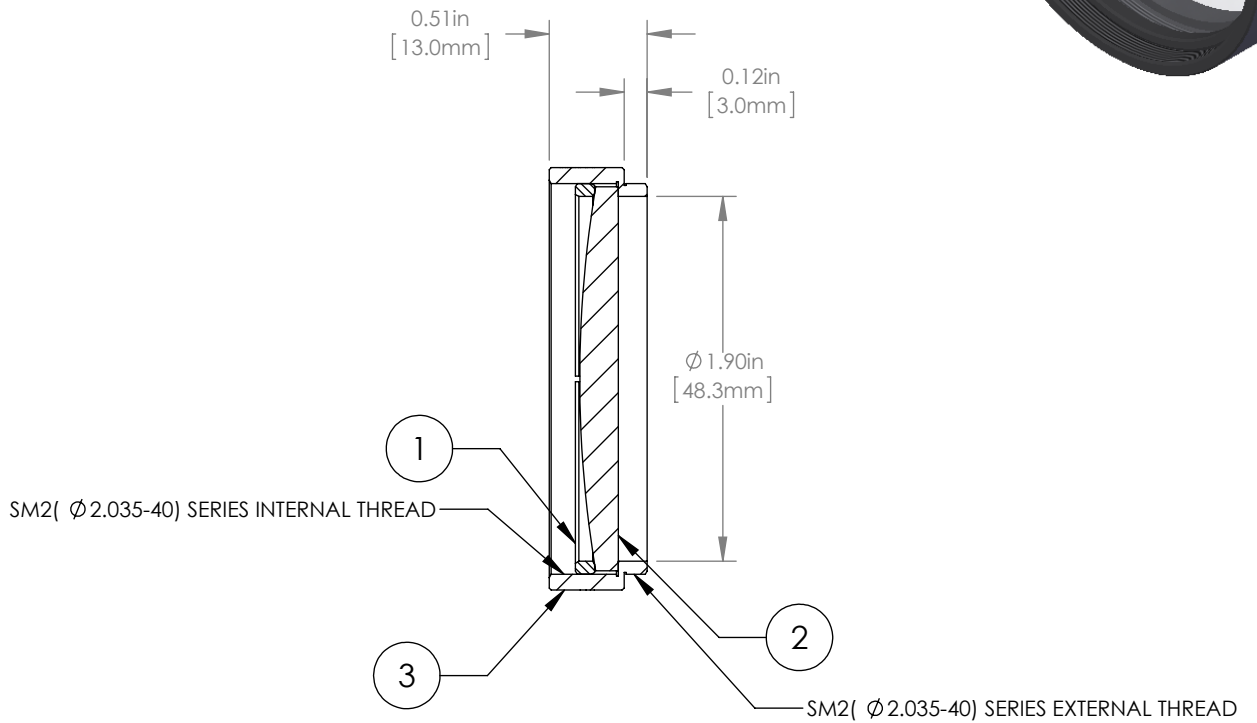
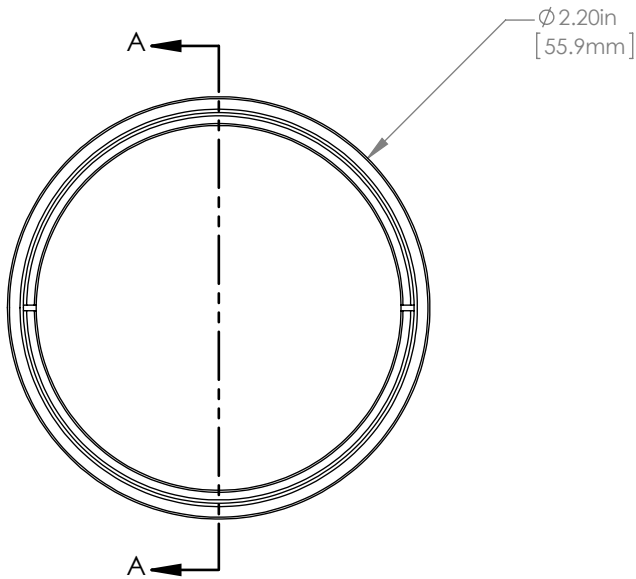


| | PART DESCRIPTION | MATERIAL |
|---|------------------|-------------------|
| ① | SM2RR | ANODIZED ALUMINUM |
| ② | LA1256-B | N-BK7 |
| ③ | ENGRAVED HOUSING | ANODIZED ALUMINUM |



NOTES/SPECIFICATIONS:

- DESIGN WAVELENGTH: 633nm
- FOCAL LENGTH: $f=300.0\text{mm} \pm 1\%$
- WORKING DISTANCE (REF): 292.8mm
- CLEAR APERTURE: $> \phi 45.72\text{mm}$
- SURFACE QUALITY: 40-20 SCRATCH-DIG
- COATING: BBAR $R_{\text{avg}} < 0.5\%$ FROM 650-1050nm, AOI: 0°, ON OUTER OPTICAL SURFACES

FOR INFORMATION ONLY
NOT FOR MANUFACTURING PURPOSES

| | | | | |
|---|------|-----------|--|---------------|
| DRAWING PROJECTION | | | THORLABS www.thorlabs.com ϕ 2" MOUNTED PLANO-CONVEX LENS, $f=300\text{mm}$, -B COAT | |
| NAME | DATE | | | |
| DRAWN | GG | 15/OCT/15 | MATERIAL | |
| APPROVAL | DD | 15/OCT/15 | | |
| COPYRIGHT © 2015 BY THORLABS | | | SEE TABLE | |
| VALUES IN PARENTHESIS ARE CALCULATED AND MAY CONTAIN ROUND OFF ERRORS | | | ITEM # | APPROX WEIGHT |
| | | | LA1256-B-ML | 34 g |
| | | | REV | A |