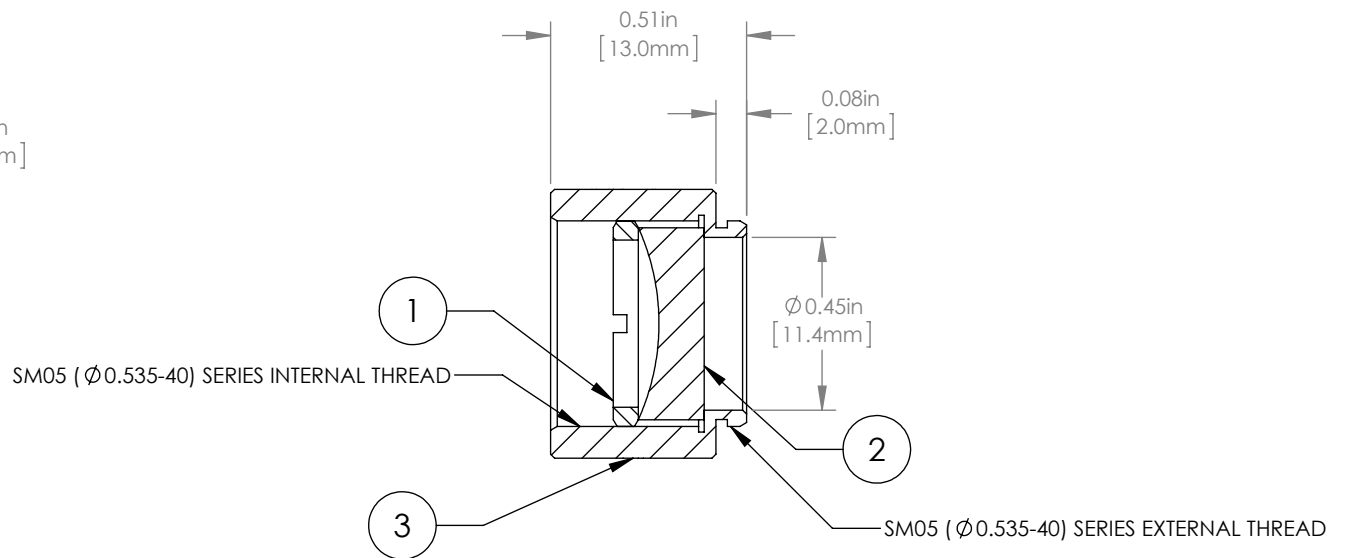
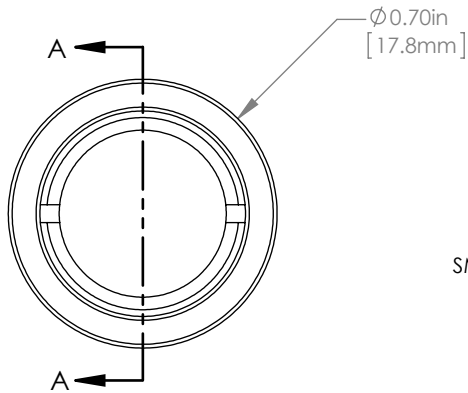
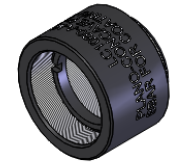


|   | PART DESCRIPTION | MATERIAL          |
|---|------------------|-------------------|
| ① | SM05RR           | ANODIZED ALUMINUM |
| ② | LC1060-A         | N-BK7             |
| ③ | ENGRAVED HOUSING | ANODIZED ALUMINUM |



NOTES/SPECIFICATIONS:

- DESIGN WAVELENGTH: 633nm
- FOCAL LENGTH:  $f=-30.0\text{mm} \pm 1\%$
- WORKING DISTANCE (REF):  $-21.7\text{mm}$
- CLEAR APERTURE:  $> \phi 11.0\text{mm}$
- SURFACE QUALITY: 40-20 SCRATCH-DIG
- COATING: BBAR  $R_{\text{avg}} < 0.5\%$  FROM 350-700nm, AOI:  $0^\circ$ , ON OUTER OPTICAL SURFACES

FOR INFORMATION ONLY  
NOT FOR MANUFACTURING PURPOSES

| DRAWING PROJECTION                          |      |   |  |  |  | <b>THORLABS</b><br>www.thorlabs.com  |  |
|---|------|---|--|--|--|--|--|
| NAME  | DATE | $\phi 1/2$ " MOUNTED PLANO-CONCAVE LENS, $f=-30\text{mm}$ , -A COAT |  |  |  | MATERIAL<br>SEE TABLE<br>REV A   |  |
| DRAWN                                       | DATE |   |  |  |  |  |  |
| APPROVAL                                    | DATE | ITEM #<br>LC1060-A-ML   |  |  |  | APPROX WEIGHT<br>5 g   |  |
| <small>COPYRIGHT © 2015 BY THORLABS</small> |      |   |  |  |  | <small>VALUES IN PARENTHESIS ARE CALCULATED AND MAY CONTAIN ROUND OFF ERRORS</small> |  |