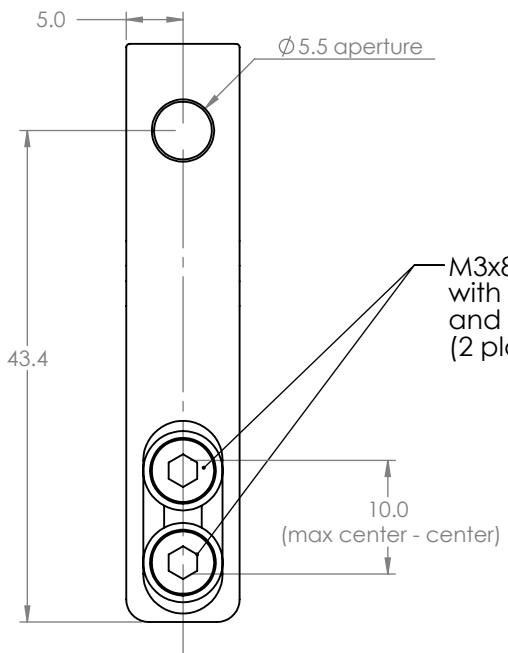
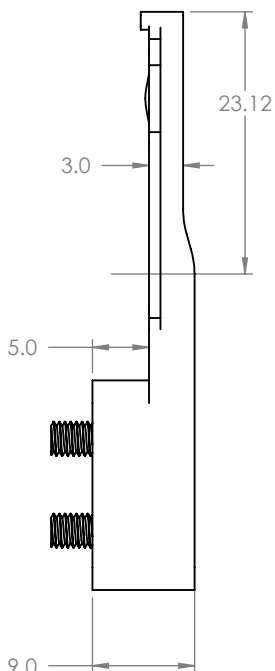
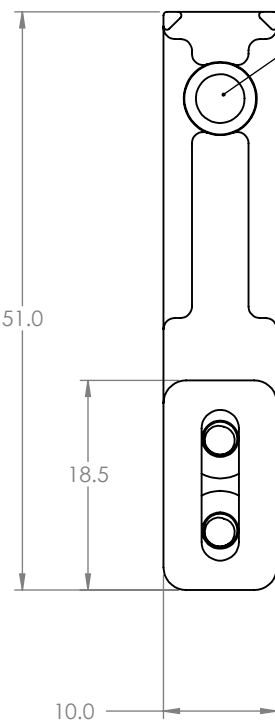


M2x0.4 - 6H ∇ 3.00

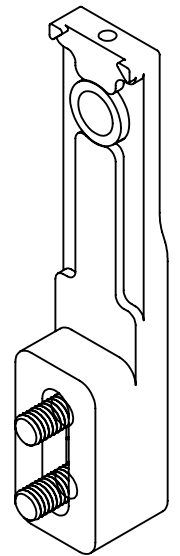
5.0

2.5

Thorlabs 352330-C lens
(AR coated for 1050 -1620nm)



M3x8 bolts
with spring washer
and flat washer
(2 places)



UNLESS OTHERWISE SPECIFIED:
DIMENSIONS ARE IN MM.
TOLERANCES ARE:
DECIMALS
.XXX \pm 0.025
.XX \pm 0.075
.X \pm 0.125
REMOVE ALL BURRS AND BREAK
SHARP EDGES 0.1 MAX.

ANGLES
 \pm 1



THIRD ANGLE PROJECTION

APPROVALS	DATE
DRAWN AD	5/11/10
CHECKED	
ENGINEER	
APPROV	
DO NOT SCALE DRAWING	

Thorlabs Quantum Electronics
10335 GUILFORD ROAD, JESSUP MD 20794

TLK-352330-C

SIZE A	Doclog No. 21056	REV. A
SCALE 1:1		SHEET 1 OF 1