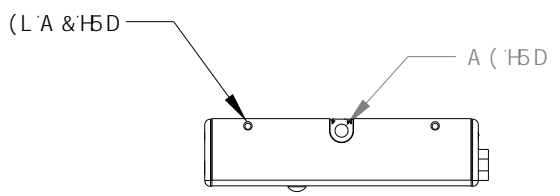
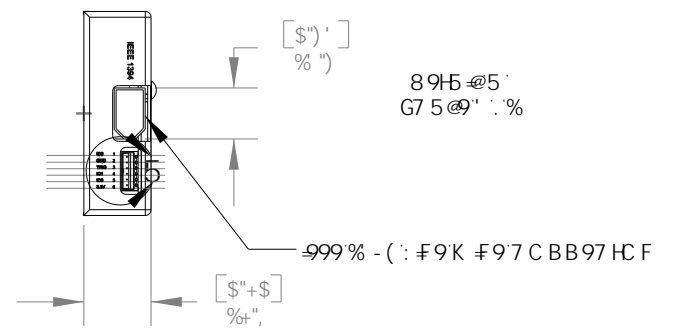
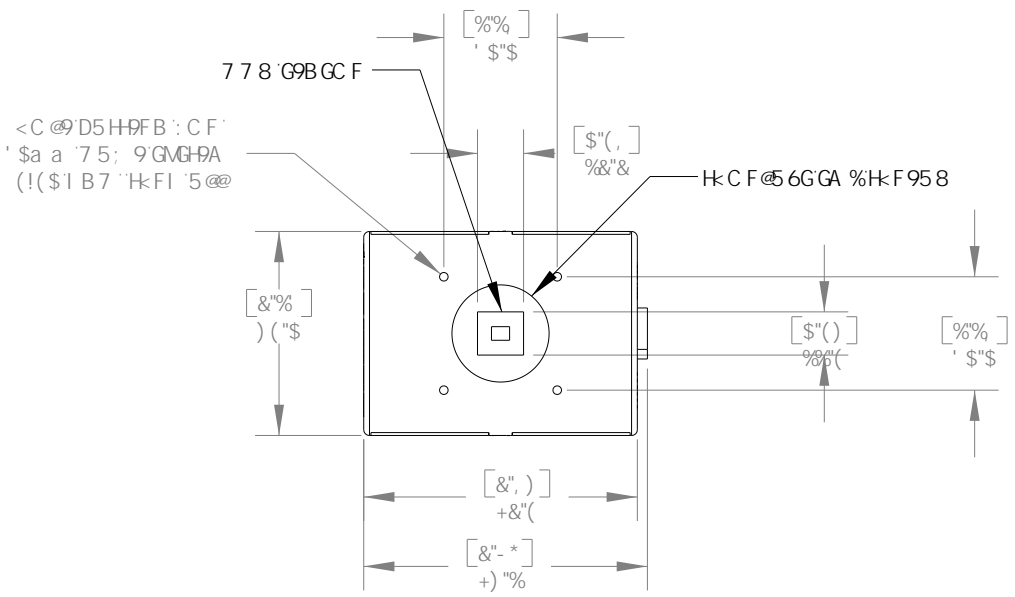
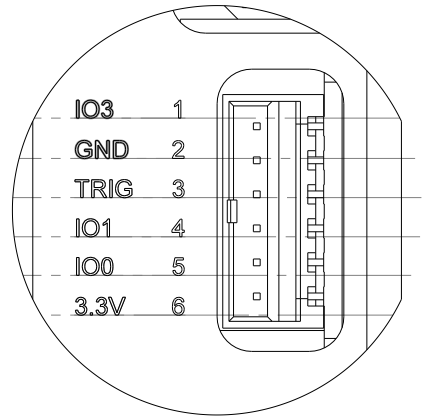
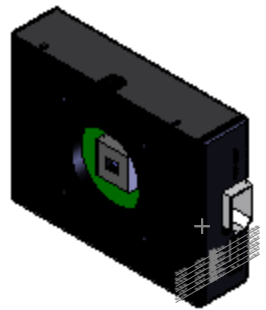
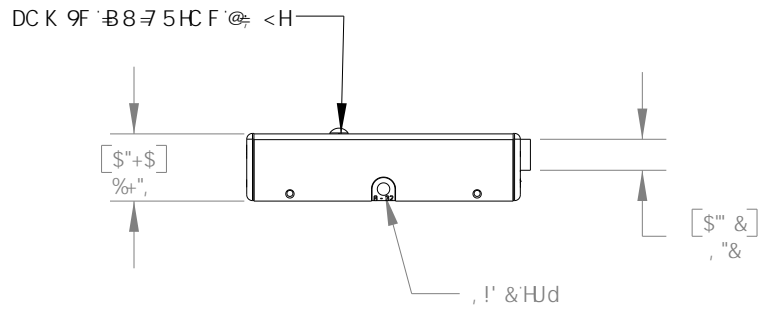


F9J "	89G7 F-DHC B.	B5A 9#85H9.



BC H9.
: CF B: CFA 5HCB CB@M
BCH: CFA 5BI : 57H F-B;

HC@F5B79G	B5A 9	85H9
1 B@9GC H: 9FK @9 GD97 = 98.	8F5K B	5D \$* #- #&\$\$*
8-A 9BGC BG5F9-B-B7 < 9G	9B: '5DDF"	HC \$* #- #&\$\$*
@B95F HC@F5B79G	A: : '5DDF"	HC \$* #- #&\$\$*
...HK C D@57 9897-A 5@ ±\$*\$%		
...H: F99 D@57 9897-A 5@ ±\$*\$%)		
5B: 1 @5F. ±' \$π"	DFC DF-9H6FM5B8 7CB: -B9BH5@	
GI F: 57 9: -B-G<." & A 7FC-B7 < 9G	H: 9-B: CFA 5HCB 7C B H5-B98-B H-K G	
D5F5 @9@CA. '\$\$\$&	8F5K B: 'G H: 9GC @DFC D9F HMC:	
: @5H 9CG '\$\$\$&	H: C F @5 6Gz-B7 "' 5B MF 9DFC 81 7HC B	
GF 5 = < H 9CG '\$\$\$&	-B D5FHC F 5G5 K < C @K H: C I H	
7C B 7 9B F-7 H M '\$\$\$&	H: 9K F H9B D9FA 4GC B C:	
D9F D9B 8-71 @5F H M '\$\$\$&	H: C F @5 6Gz-B7 "' 4DFC < 6+98"	
H: F 958. 7 @5GG &: H		

Hk C F @ 5 6 G B 7 "		DC '6CL' **
		B9K HC B B >
H# @.		
%\$&(1+*, '&(!6#7C @CF 778 75A 9F5		
A 5H9F 5@	G#9	F9J "
	5	5
G75 @. %&	G<99H% C: %	
8K ; "'BC"	D5FHBC "	
%) * +!9\$%	87' %\$7	