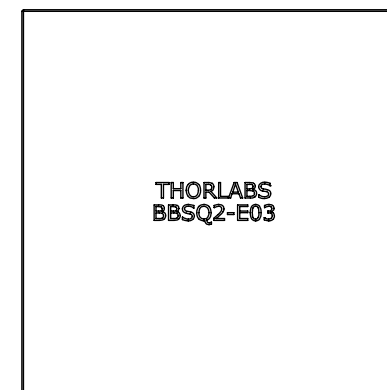
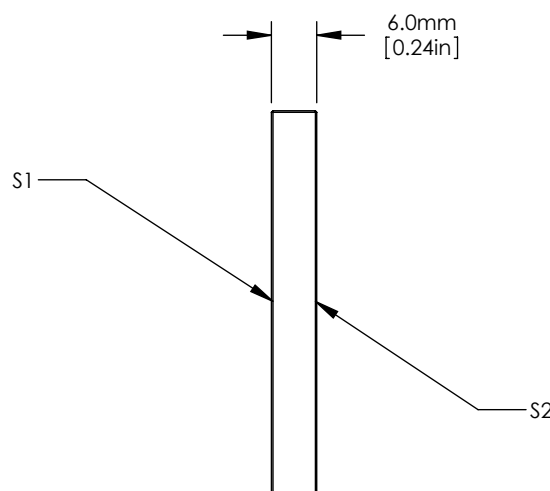
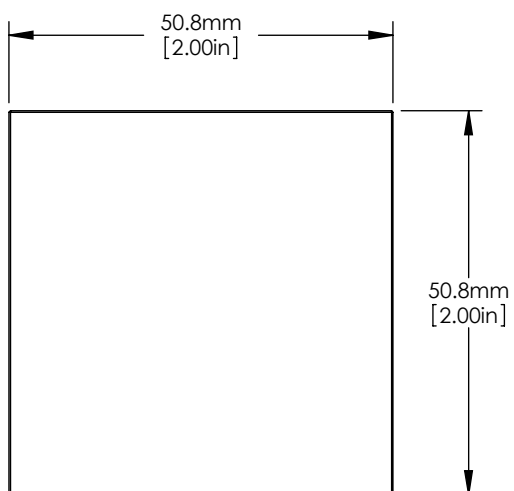




ISOMETRIC VIEW
SCALE: 1:2



NOTES/SPECIFICATIONS:

1. CLEAR APERTURE: $> \varnothing 45.72 \times 45.72$ mm
2. SURFACE FLATNESS (S1): $\lambda/10$ AT 633 nm OVER CLEAR APERTURE
3. SURFACE QUALITY (S1): 10-5 SCRATCH-DIG
(S2): FINE GRIND
4. PARALLELISM: ≤ 3 arcmin
5. THICKNESS TOLERANCE: ± 0.20 mm
6. DESIGN WAVELENGTH RANGE: 750-1100 nm
7. COATING (S1): BROADBAND HR, DIELECTRIC
 R_s avg: $>99\%$ FROM 750-1100 nm
 R_p avg: $>99\%$ FROM 750-1100 nm
AOI: 0° TO 45°
8. DAMAGE THRESHOLD: 0.50 J/cm^2 10 nm PULSE, 10 Hz AT 1064 nm

FOR INFORMATION ONLY
NOT FOR MANUFACTURING PURPOSES

DRAWING PROJECTION			 www.thorlabs.com	
	NAME	DATE		
DRAWN	RJ	06/DEC/10	MATERIAL	
APPROVAL	BW	04/NOV/21	FUSED SILICA	REV C
COPYRIGHT © 2021 BY THORLABS			ITEM #	APPROX WEIGHT
VALUES IN PARENTHESIS ARE CALCULATED AND MAY CONTAIN ROUND OFF ERRORS			BBSQ2-E03	0.034 kg