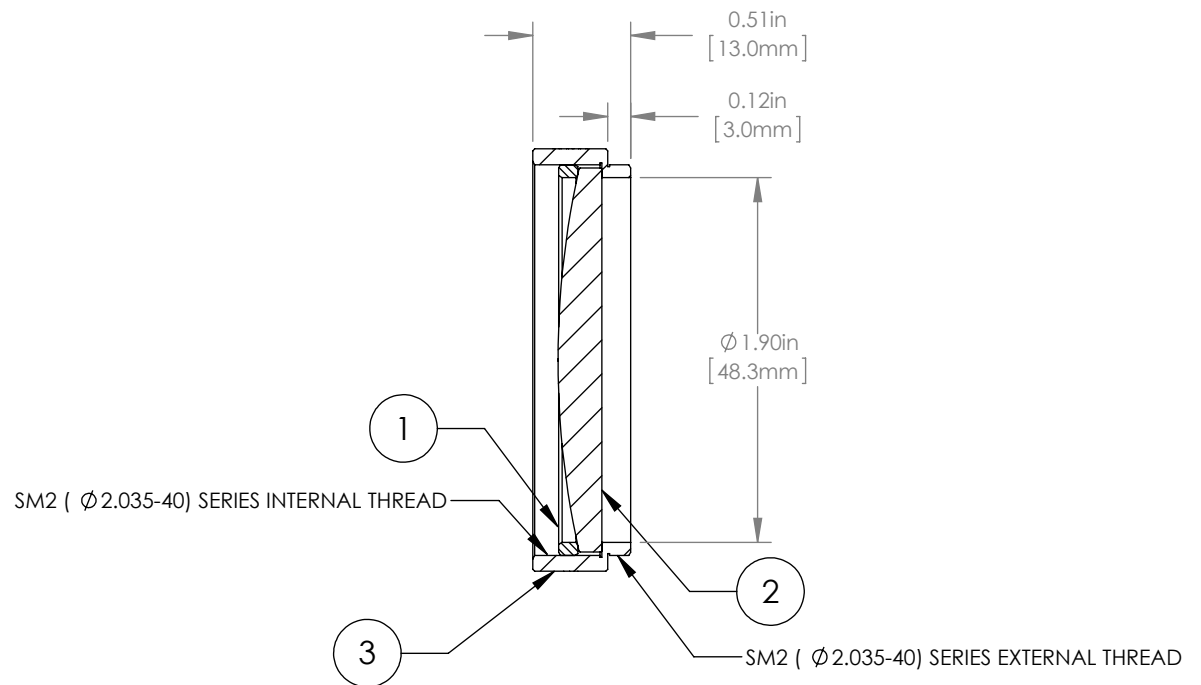
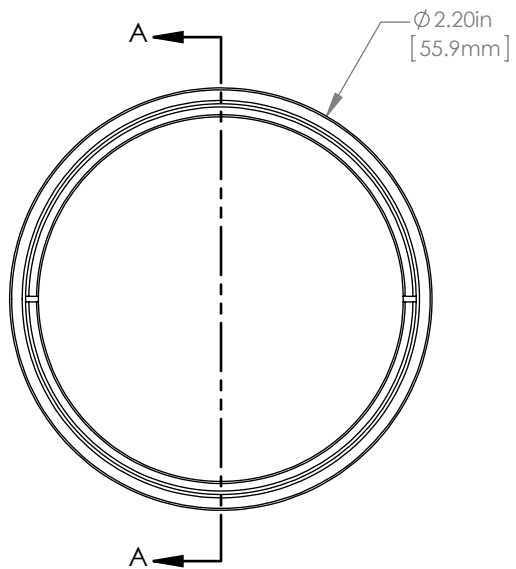


	PART DESCRIPTION	MATERIAL
①	SM2RR	ANODIZED ALUMINUM
②	LA4538	UV FUSED SILICA
③	ENGRAVED HOUSING	ANODIZED ALUMINUM



NOTES/SPECIFICATIONS:

1. DESIGN WAVELENGTH: 546nm
2. FOCAL LENGTH: $f=250.0\text{mm} \pm 1\%$
3. WORKING DISTANCE (REF): 242.2mm
4. CLEAR APERTURE: $> \varnothing 45.72\text{mm}$
5. SURFACE QUALITY: 40-20 SCRATCH-DIG

FOR INFORMATION ONLY
NOT FOR MANUFACTURING PURPOSES

DRAWING PROJECTION						THORLABS www.thorlabs.com		
NAME	DATE	$\varnothing 2''$ MOUNTED PLANO-CONVEX LENS, $f=250\text{mm}$				MATERIAL SEE TABLE		REV
DRAWN	DATE							A
APPROVAL	DATE	COPYRIGHT © 2015 BY THORLABS				ITEM # LA4538-ML		APPROX WEIGHT
VALUES IN PARENTHESIS ARE CALCULATED AND MAY CONTAIN ROUND-OFF ERRORS						33 g		