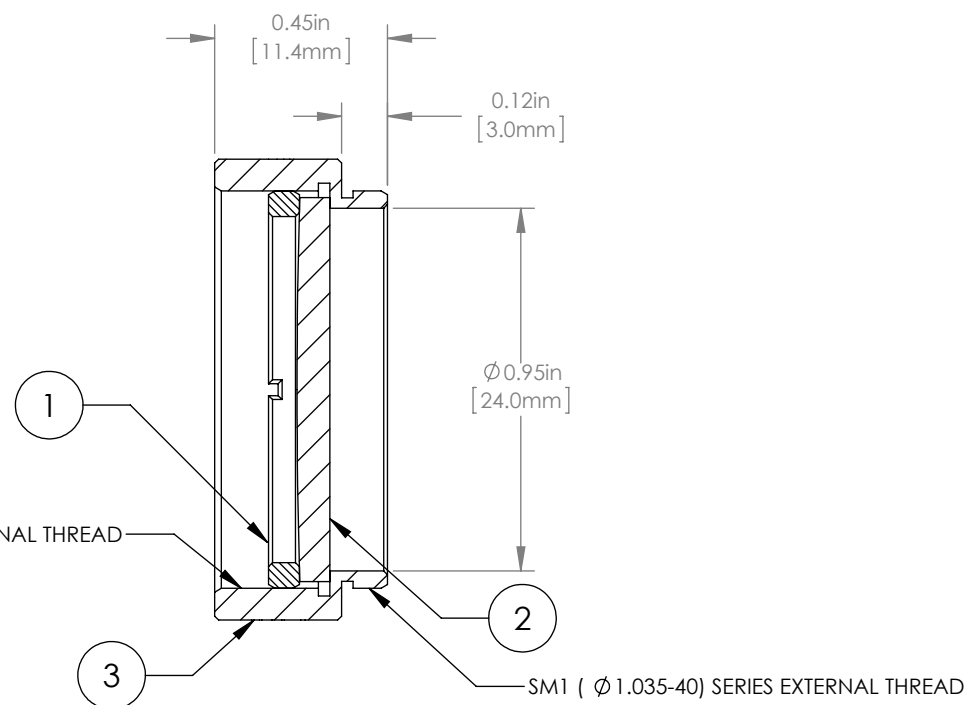
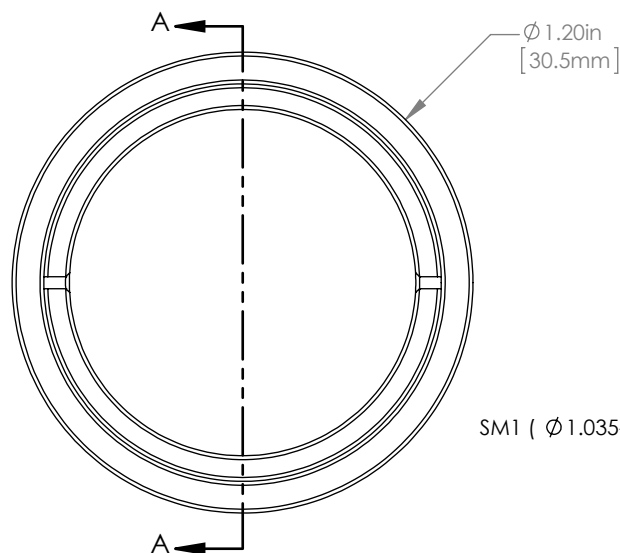


	PART DESCRIPTION	MATERIAL
①	SM1RR	ANODIZED ALUMINUM
②	LA4663	UV FUSED SILICA
③	ENGRAVED HOUSING	ANODIZED ALUMINUM



NOTES/SPECIFICATIONS:

1. DESIGN WAVELENGTH: 546nm
2. FOCAL LENGTH: $f=1000.0\text{mm} \pm 1\%$
3. WORKING DISTANCE (REF): 994.7mm
4. CLEAR APERTURE: $> \text{Ø} 22.86\text{mm}$
5. SURFACE QUALITY: 40-20 SCRATCH-DIG

FOR INFORMATION ONLY
NOT FOR MANUFACTURING PURPOSES

DRAWING PROJECTION						THORLABS www.thorlabs.com	
	NAME		DATE	$\text{Ø} 1''$ MOUNTED PLANO-CONVEX LENS, $f=1000\text{mm}$			
DRAWN	GG		13/OCT/15	REV A			
APPROVAL	DD		13/OCT/15	MATERIAL SEE TABLE			
COPYRIGHT © 2015 BY THORLABS				ITEM #		APPROX WEIGHT	
VALUES IN PARENTHESIS ARE CALCULATED AND MAY CONTAIN ROUND OFF ERRORS				LA4663-ML		8 g	