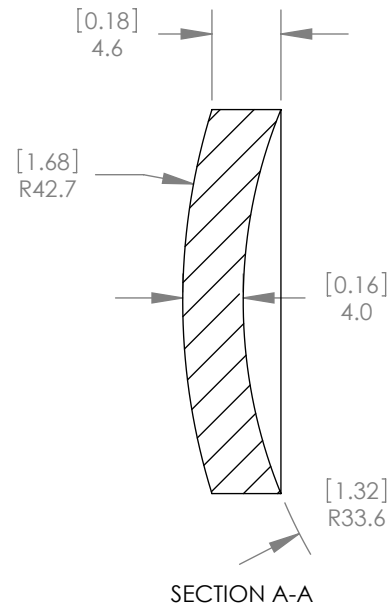
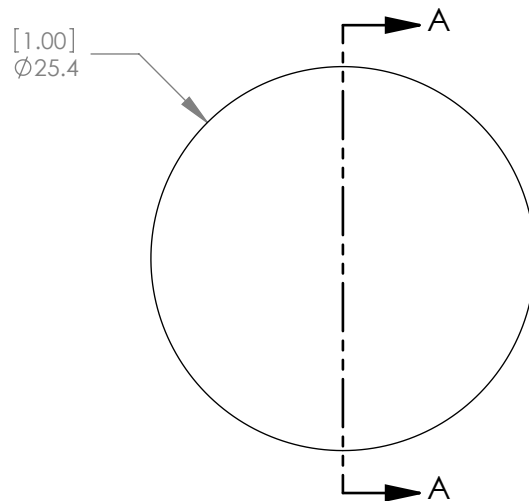


1:1 ISOMETRIC VIEW FOR REFERENCE ONLY



NOTES/SPECIFICATIONS:

- DESIGN WAVELENGTH: 10.6 $\mu$ m
- FOCAL LENGTH: -150.00mm  $\pm$  1%
- BACK FOCAL LENGTH (REF): -141.80mm
- CLEAR APERTURE: >80%
- SURFACE QUALITY: 60-40 SCRATCH-DIG
- CENTRATION: <3 arcmin
- DIAMETER TOLERANCE: +0.0/-0.1mm
- THICKNESS TOLERANCE:  $\pm$  0.1mm
- COATING: BBAR Ravg <1.5% FROM 8 $\mu$ m-12 $\mu$ m, 0° AOI, ON BOTH OPTICAL SURFACES

ALL DIMENSIONS ARE IN THE FORM  $\frac{[in]}{mm}$ .  
 THIS DRAWING IS FOR INFORMATION ONLY  
 NOT INTENDED FOR MANUFACTURING

**THORLABS INC.** PO BOX 366  
 NEWTON NJ

	NAME	DATE
DRAWN	WD	8/27/2009
ENG APPR.	BW	9/03/2009
MFG APPR.	PM	9/08/2009

TITLE: f = -150.00 mm,  $\emptyset$ 1" ZnSe, - Meniscus Lens,  
 BBAR: 8-12 $\mu$ m

**PROPRIETARY AND CONFIDENTIAL**  
 THE INFORMATION CONTAINED IN THIS DRAWING IS THE SOLE PROPERTY OF THORLABS, INC. ANY REPRODUCTION IN PART OR AS A WHOLE WITHOUT THE WRITTEN PERMISSION OF THORLABS, INC. IS PROHIBITED.

MATERIAL: ZINC SELENIDE CVD (LASER GRADE)      SIZE A      REV. A  
 SCALE: 2:1      SHEET 1 OF 1

DWG. NO. 20229-E01      PART NO. LF7113-F