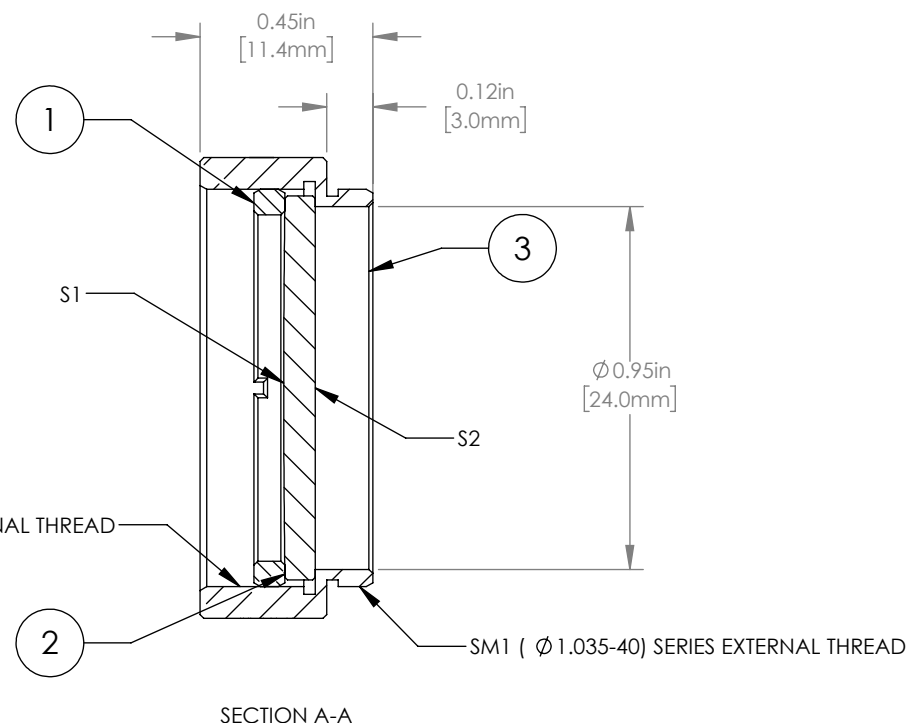
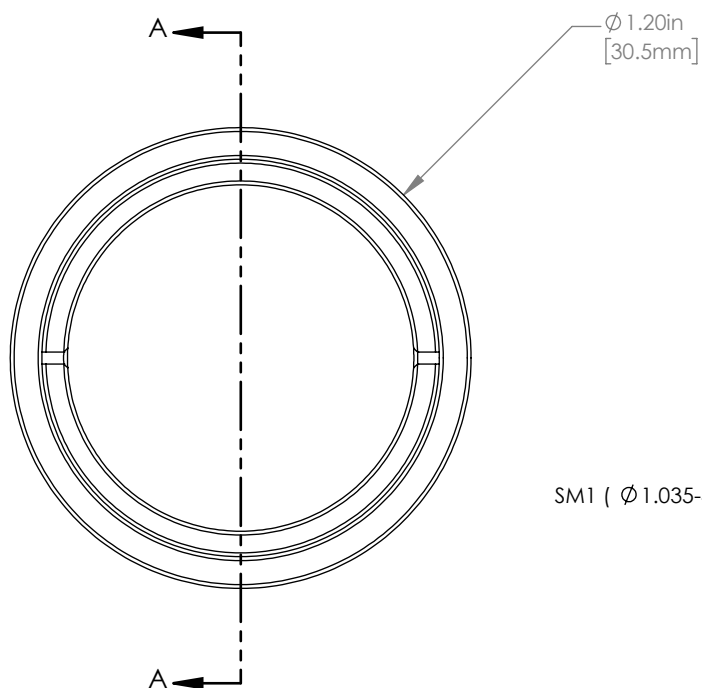


	PART DESCRIPTION	MATERIAL
①	SM1RR	ANODIZED ALUMINUM
②	LA1258	N-BK7
③	ENGRAVED HOUSING	ANODIZED ALUMINUM



NOTES/SPECIFICATIONS:

- DESIGN WAVELENGTH: 587.6 nm
- FOCAL LENGTH: $f=2000.0\text{ mm} \pm 1\%$
- WORKING DISTANCE (REF): 1994.8 mm
- CLEAR APERTURE: $\phi 22.9\text{ mm}$
- SURFACE QUALITY: 40-20 SCRATCH-DIG

FOR INFORMATION ONLY
NOT FOR MANUFACTURING PURPOSES

DRAWING PROJECTION			THORLABS www.thorlabs.com	
	NAME	DATE	MOUNTED $\phi 25.4\text{ mm}$ $f=2000.0\text{ mm}$ PLANO CONVEX LENS	
DRAWN	GG	28/AUG/18	REVISION	
APPROVAL	DD	10/SEP/18	REV A	
COPYRIGHT © 2019 BY THORLABS			MATERIAL	
VALUES IN PARENTHESIS ARE CALCULATED AND MAY CONTAIN ROUND OFF ERRORS			SEE TABLE	
			ITEM #	APPROX WEIGHT
			LA1258-ML	8 g