

NOTES:

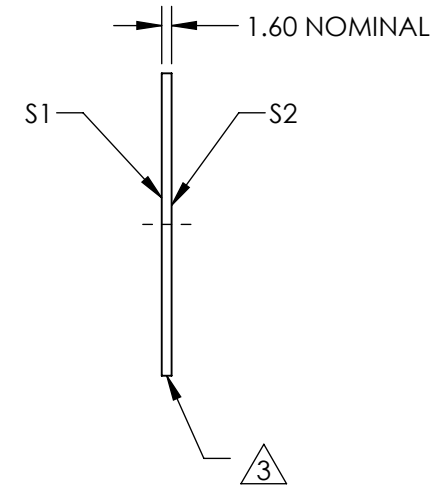
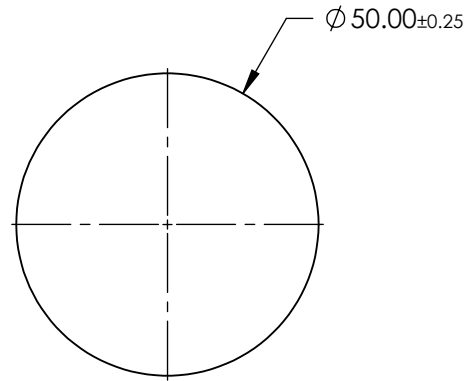
1. SUBSTRATE MATERIAL: Float Glass
2. COATING (APPLY ACROSS CLEAR APERTURE, SPECIFICATION APPLIES AFTER SANDBLASTING):

S1: R(AVG) >95% @ 450 - 650nm

S2: NONE

 FINE GRIND SURFACE

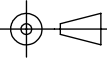
4. RoHS: COMPLIANT



SPECIFICATIONS SUBJECT TO CHANGE WITHOUT NOTICE
DIMENSIONS ARE FOR REFERENCE ONLY

**FOR INFORMATION ONLY:
DO NOT MANUFACTURE
PARTS TO THIS DRAWING**

 **Edmund Optics®**

| | | | | | | | |
|--------------------|----------------------|----------------------|--|----|--------|---|--------------|
| | S1 | S2 | THIRD ANGLE PROJECTION  | | TITLE | 50mm Dia. Enhanced Aluminum Coated, Reflective Diffuser | |
| MIN CLEAR APERTURE | Ø47.50 | N/A | ALL DIMS IN | mm | DWG NO | 12455 | SHEET 1 OF 1 |
| BEVEL | PROTECTIVE AS NEEDED | PROTECTIVE AS NEEDED | | | | | |