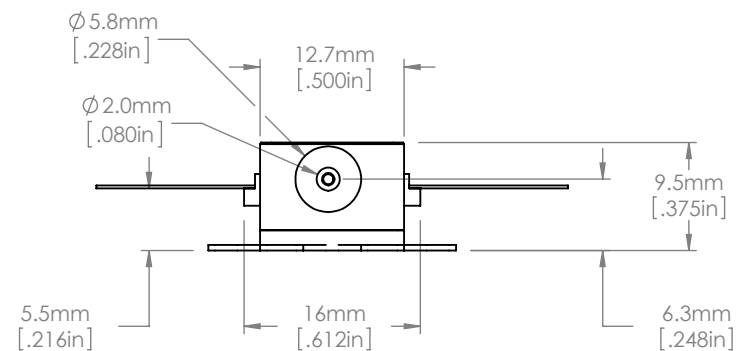
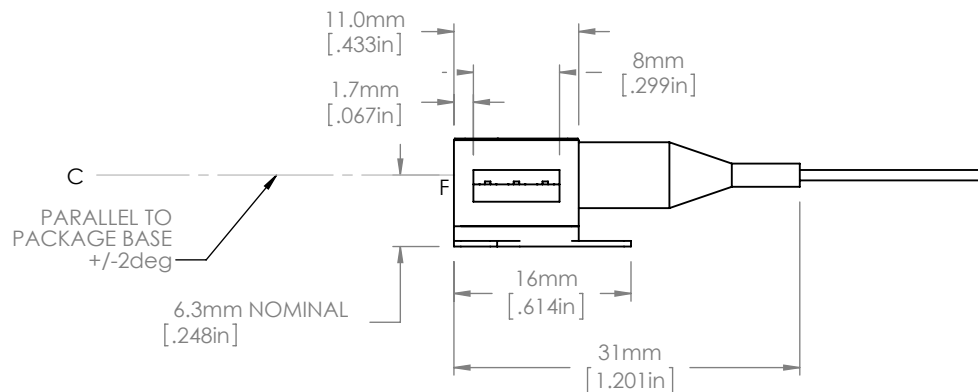


PIN IDENTIFICATION

- 1. TEC +
- 2. Thermistor
- 3. Thermistor
- 4. Dev Anode
- 5. Dev Cathode
- 6. TEC -



NOTES :

- 1. F DENOTES EMISSION POINT FROM CHIP FACET
C DENOTES CENTRAL AXIS FOR EMERGENT BEAM
- 2. THE DEVICE IS PROVIDED WITH A FIBER TAIL OF 1000mm MINIMUM LENGTH AND TERMINATED IN AN FC/APC CONNECTOR; THE FIBER IS CORNING PM1550 TYPE.

FOR INFORMATION ONLY
NOT FOR MANUFACTURING PURPOSES

DRAWING PROJECTION			 www.thorlabs.com	
NAME	DATE			
DRAWN	AD	27/JUL/12	SAF GAIN CHIP ASSEMBLY (1550nm)	
APPROVAL	JW	27/JUL/12	MATERIAL	N/A
COPYRIGHT © 2012 BY THORLABS			REV	A
VALUES IN PARENTHESIS ARE CALCULATED AND MAY CONTAIN ROUND OFF ERRORS		ITEM #	SAF1550P2	APPROX WEIGHT
				0.018 kg