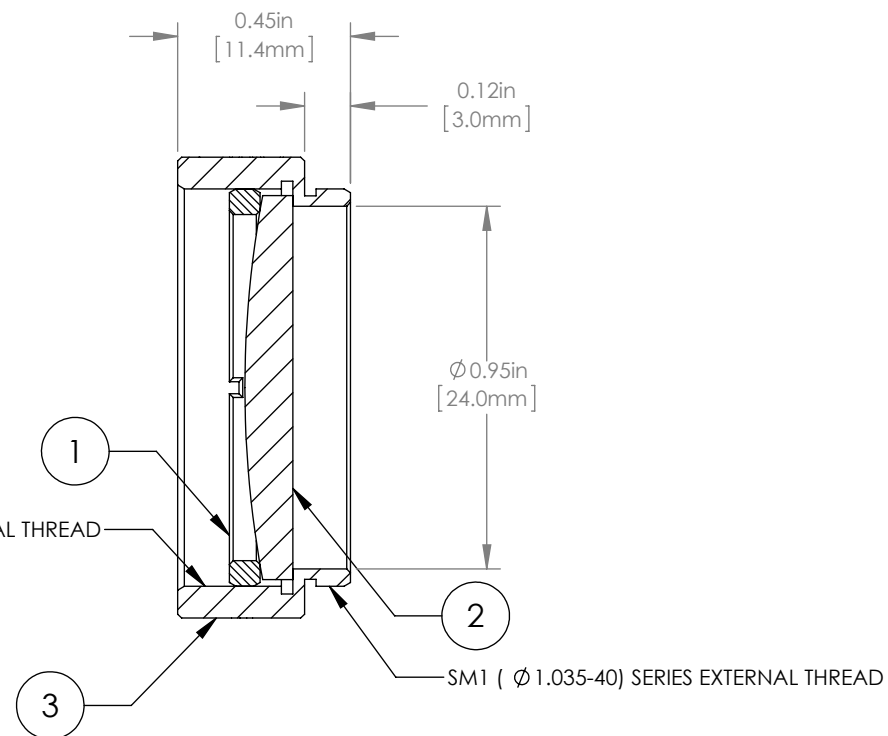
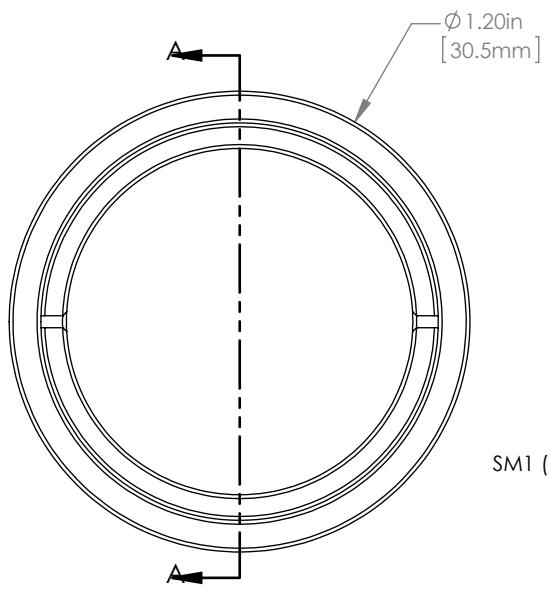


	PART DESCRIPTION	MATERIAL
①	SM1RR	ANODIZED ALUMINUM
②	LA874-YAG	UV FUSED SILICA
③	ENGRAVED HOUSING	ANODIZED ALUMINUM



NOTES/SPECIFICATIONS:

- DESIGN WAVELENGTH: 546nm
- FOCAL LENGTH: $f=150.0\text{mm} \pm 1\%$
- WORKING DISTANCE (REF): 144.0mm
- CLEAR APERTURE: $> \phi 22.86\text{mm}$
- SURFACE QUALITY: 40-20 SCRATCH-DIG
- COATING: BBAR $R_{\text{avg}} < 0.25\%$ DUAL VAR 532 & 1064nm, AOI: 0°, ON OUTER OPTICAL SURFACES

FOR INFORMATION ONLY
NOT FOR MANUFACTURING PURPOSES

DRAWING PROJECTION			THORLABS www.thorlabs.com	
NAME	DATE	$\phi 1"$ MOUNTED PLANO-CONVEX LENS, $f=150\text{mm}$, -YAG COAT		
DRAWN	GG	13/OCT/15	MATERIAL	SEE TABLE
APPROVAL	DD	13/OCT/15	ITEM #	LA4874-YAG-ML
COPYRIGHT © 2015 BY THORLABS			APPROX WEIGHT	9 g
VALUES IN PARENTHESIS ARE CALCULATED AND MAY CONTAIN ROUND OFF ERRORS			REV	A