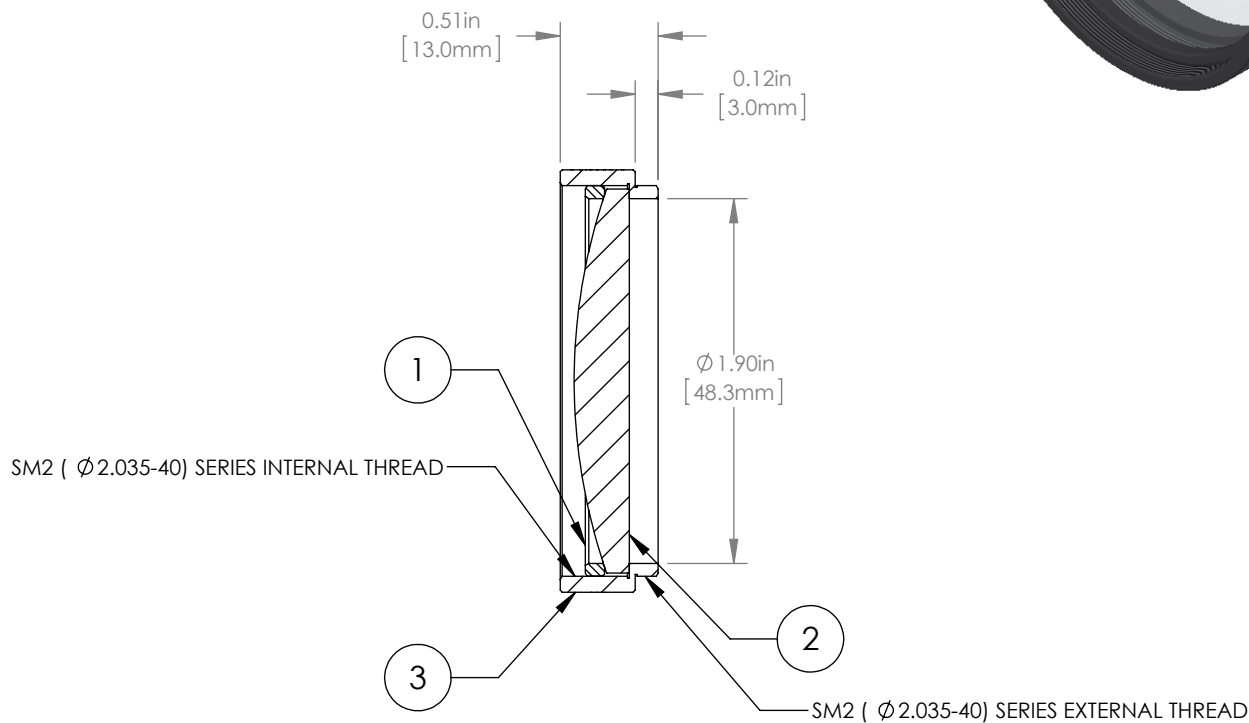
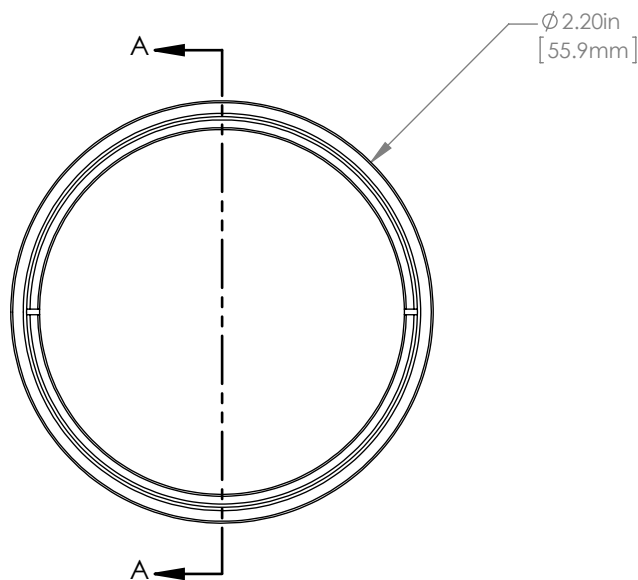


| | PART DESCRIPTION | MATERIAL |
|---|------------------|-------------------|
| ① | SM2RR | ANODIZED ALUMINUM |
| ② | LA1417-C | N-BK7 |
| ③ | ENGRAVED HOUSING | ANODIZED ALUMINUM |



NOTES/SPECIFICATIONS:

1. DESIGN WAVELENGTH: 633nm
2. FOCAL LENGTH: $f=150.0\text{mm} \pm 1\%$
3. WORKING DISTANCE (REF): 141.4mm
4. CLEAR APERTURE: $> \text{Ø} 45.72\text{mm}$
5. SURFACE QUALITY: 40-20 SCRATCH-DIG
6. COATING: BBAR $R_{\text{avg}} < 0.5\%$ FROM 1050-1700nm, AOI: 0°, ON OUTER OPTICAL SURFACES

FOR INFORMATION ONLY
NOT FOR MANUFACTURING PURPOSES

| | | | | |
|---|------|-----------|--|---------------|
| DRAWING PROJECTION | | | THORLABS www.thorlabs.com Ø 2" MOUNTED PLANO-CONVEX LENS, f=150mm, -C COAT | |
| NAME | DATE | | | |
| DRAWN | GG | 15/OCT/15 | MATERIAL SEE TABLE | |
| APPROVAL | DD | 15/OCT/15 | | |
| COPYRIGHT © 2015 BY THORLABS VALUES IN PARENTHESIS ARE CALCULATED AND MAY CONTAIN ROUND OFF ERRORS | | | ITEM # | APPROX WEIGHT |
| | | | LA1417-C-ML | 40 g |