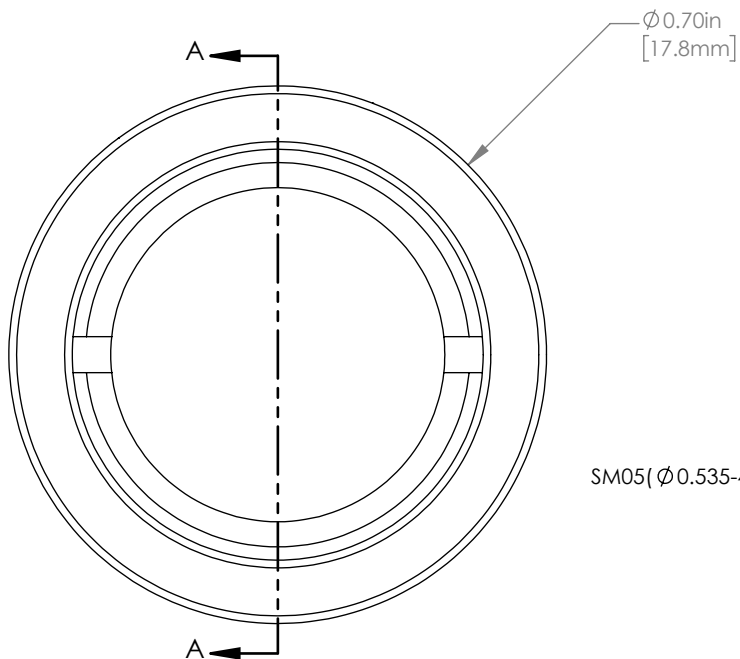
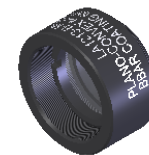
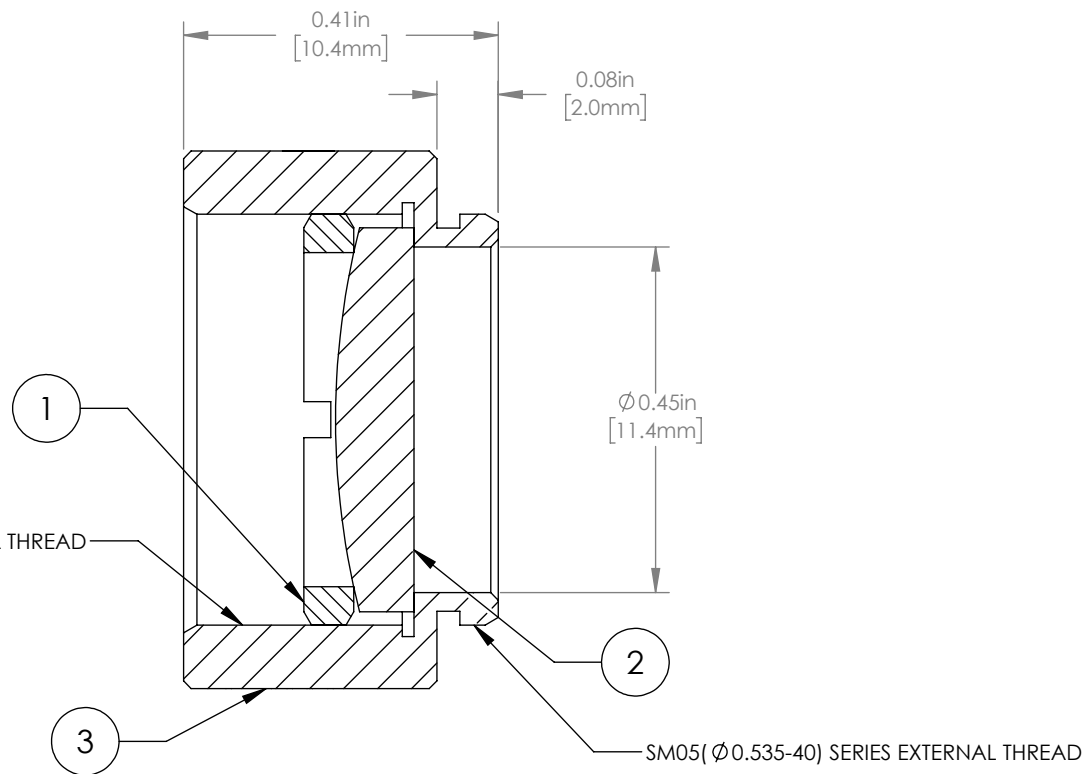


	PART DESCRIPTION	MATERIAL
①	SM05RR	ANODIZED ALUMINUM
②	LA1213-B	N-BK7
③	ENGRAVED HOUSING	ANODIZED ALUMINUM



$\varnothing 0.70\text{in}$
[17.8mm]

SM05 ($\varnothing 0.535-40$) SERIES INTERNAL THREAD



NOTES/SPECIFICATIONS:

- DESIGN WAVELENGTH: 587.6nm
- FOCAL LENGTH: $f=49.8\text{mm} \pm 1\%$
- WORKING DISTANCE (REF): 45.3mm
- CLEAR APERTURE: $> \varnothing 11.4\text{mm}$
- SURFACE QUALITY: 40-20 SCRATCH-DIG
- CENTRATION: $< 3\text{arcmin}$
- COATING: BBAR $R_{\text{avg}} < 0.5\%$ FROM 650-1050nm, AOI: 0° ,

FOR INFORMATION ONLY
NOT FOR MANUFACTURING PURPOSES

DRAWING PROJECTION						THORLABS www.thorlabs.com		
NAME	DATE	$\varnothing 1/2$ " MOUNTED PLANO CONVEX LENS, $f=50\text{mm}$, -B COAT				REV	B	
DRAWN	GG	07/SEP/17	MATERIAL				SEE TABLE	
APPROVAL	DD	07/SEP/17	ITEM #				APPROX WEIGHT	
COPYRIGHT © 2017 BY THORLABS <small>VALUES IN PARENTHESIS ARE CALCULATED AND MAY CONTAIN ROUND OFF ERRORS</small>				LA1213-B-ML		4 g		