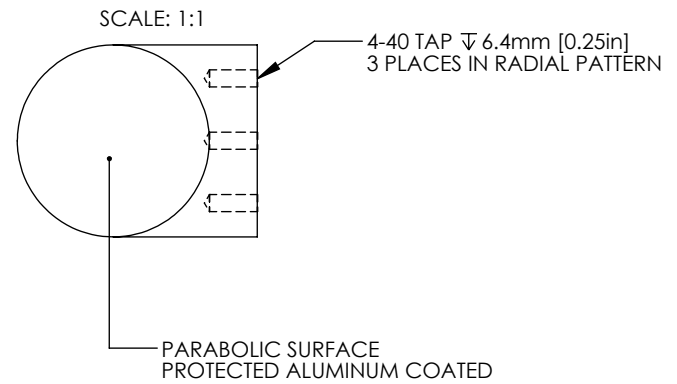
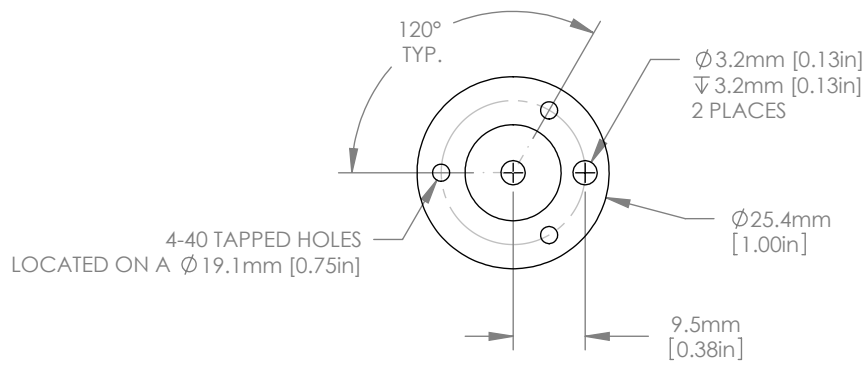


1:1 ISOMETRIC VIEW



NOTES/SPECIFICATIONS:

1. PFL(PARENT FOCAL LENGTH): 50.8mm ±1%
 2. REFLECTED FOCAL LENGTH: 101.6mm ±1%
 3. CLEAR APERTURE: >90% OF DIAMETER
 4. SURFACE IRREGULARITY: 0.25λ @ 633nm
 5. SURFACE QUALITY: 40-20 SCRATCH-DIG
 6. SURFACE ROUGHNESS: <100A RMS
 7. COATING (PARABOLIC SURFACE): PROTECTED ALUMINUM
 8. R_{avg}>90% FROM 450nm - 2μm, R_{avg} >95% 2 - 20μm
- BLACK ANODIZED FINISH (NON-OPTICAL SURFACES)

FOR INFORMATION ONLY
NOT FOR MANUFACTURING PURPOSES

| | | | | |
|---|------|--|-------------------------------------|-------|
| DRAWING PROJECTION | | | THORLABS www.thorlabs.com | |
| NAME | DATE | Ø 25.4mm 90° OFF AXIS PARABOLA PFL=50.8mm, PROTECTED ALUMINUM | | |
| DRAWN | MG | 25/JULY/12 | MATERIAL | |
| APPROVAL | DD | 30/JULY/12 | 6061-T6 ALUMINUM | REV A |
| COPYRIGHT © 2012 BY THORLABS | | | | |
| VALUES IN PARENTHESIS ARE CALCULATED AND MAY CONTAIN ROUND OFF ERRORS | | ITEM # | APPROX WEIGHT | |
| | | MPD254508-90-G01 | 0.01 kg | |