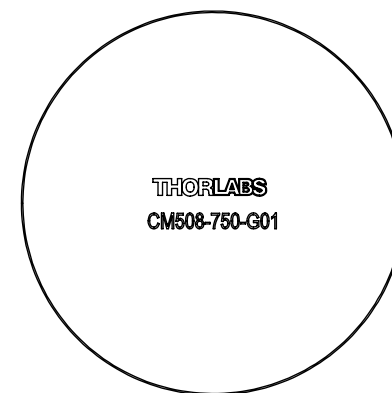


SECTION A-A



NOTES/SPECIFICATIONS:

1. CLEAR APERTURE: $> \varnothing 45.72\text{mm}$
2. SURFACE IRREGULARITY (S1): $\leq \lambda/4$ AT 633nm OVER CLEAR APERTURE
3. BACK SURFACE (S2): UNIFORM FINE GRIND #12-#20 GRIT
4. SURFACE QUALITY(S1): 40-20 SCRATCH-DIG
5. THICKNESS TOLERANCE: $\pm 0.1\text{ mm}$
6. DIAMETER TOLERANCE: $+0.0/-0.2\text{ mm}$
7. COATING(S1): PROTECTED ALUMINUM
 - Ravg: $>90\%$ FROM 450nm-2 μm
 - Ravg: $>95\%$ FROM 2 μm -20 μm
 - AOI: 0° TO 45°

FOR INFORMATION ONLY
NOT FOR MANUFACTURING PURPOSES

DRAWING PROJECTION			THORLABS www.thorlabs.com $\varnothing 50.8\text{mm}$, f=750mm CONCAVE PROTECTED ALUMINUM MIRROR	
NAME	DATE			
DRAWN	YB	16/APR/18	MATERIAL N-BK7 REV A	
APPROVAL	DD	16/APR/18		
COPYRIGHT © 2018 BY THORLABS VALUES IN PARENTHESIS ARE CALCULATED AND MAY CONTAIN ROUND OFF ERRORS			ITEM #	APPROX WEIGHT
			CM508-750-G01	46.33 kg