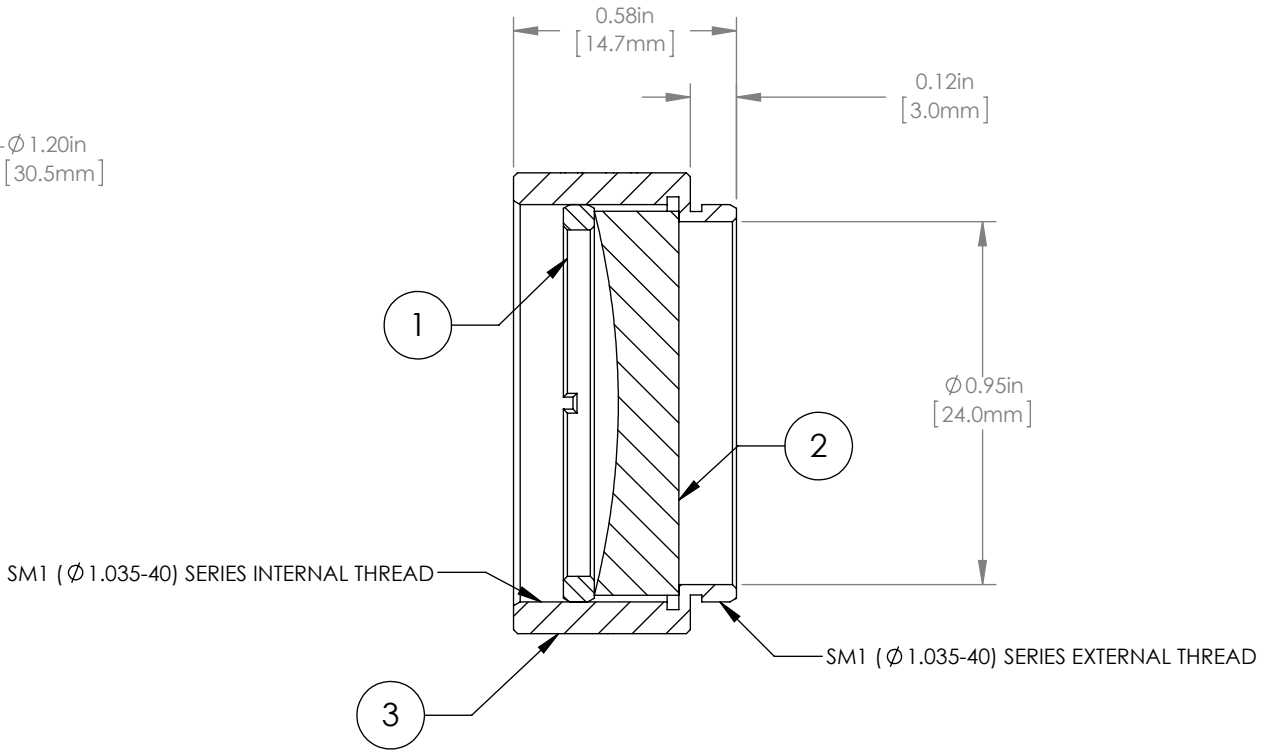
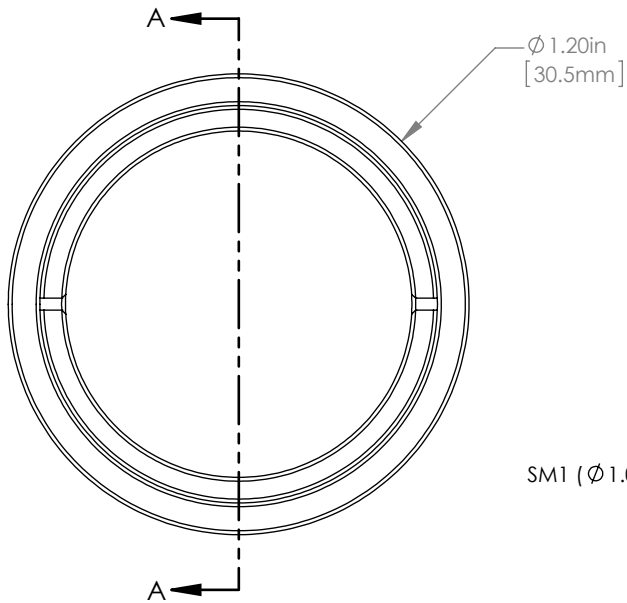


	PART DESCRIPTION	MATERIAL
①	SM1RR	ANODIZED ALUMINUM
②	LC1120-A	N-BK7
③	ENGRAVED HOUSING	ANODIZED ALUMINUM



NOTES/SPECIFICATIONS:

- DESIGN WAVELENGTH: 633nm
- FOCAL LENGTH: $f = -99.9\text{mm} \pm 1\%$
- WORKING DISTANCE (REF): -91.6mm
- CLEAR APERTURE: $> \varnothing 22.86\text{mm}$
- SURFACE QUALITY: 40-20 SCRATCH-DIG
- COATING: BBAR $R_{\text{avg}} < 0.5\%$ FROM 350-700nm, AOI: 0° , ON OUTER OPTICAL SURFACES

FOR INFORMATION ONLY
NOT FOR MANUFACTURING PURPOSES

DRAWING PROJECTION

	NAME	DATE
DRAWN	GG	20/NOV/15
APPROVAL	DD	20/NOV/15

COPYRIGHT © 2015 BY THORLABS
VALUES IN PARENTHESIS ARE CALCULATED AND MAY CONTAIN ROUND OFF ERRORS

THORLABS
www.thorlabs.com

$\varnothing 1"$ MOUNTED PLANO-CONCAVE LENS, $f = -100\text{mm}$, -A COATED

MATERIAL SEE TABLE REV A

ITEM # LC1120-A-ML APPROX WEIGHT 7g