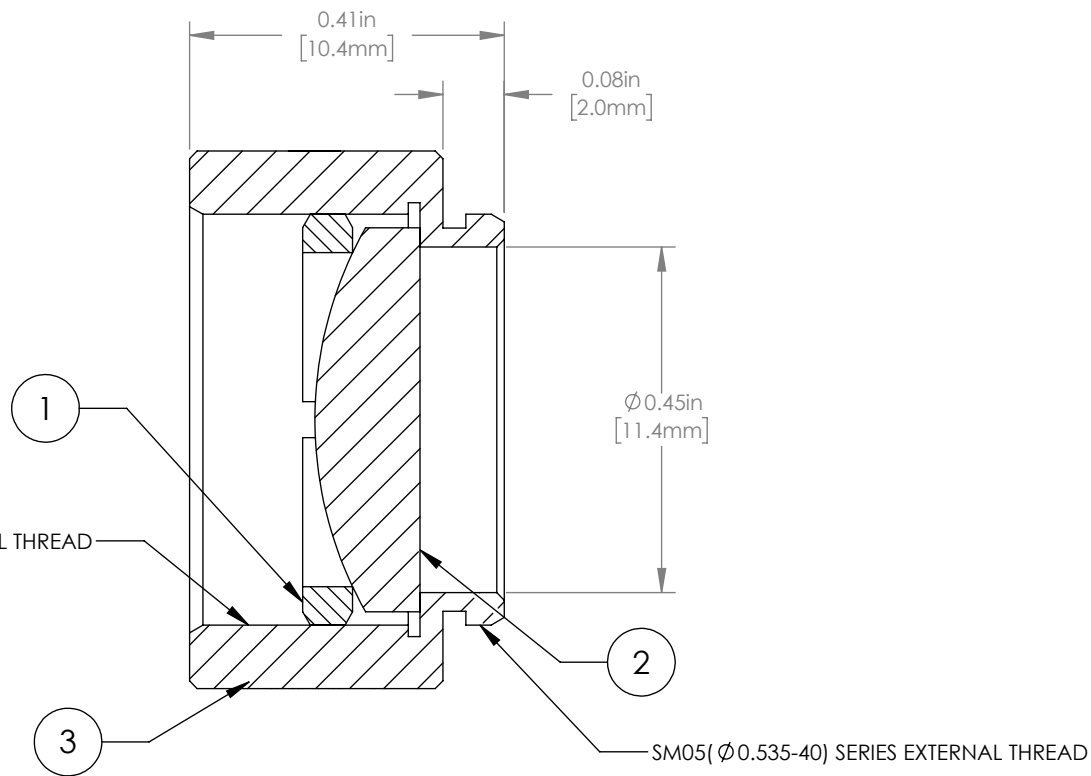
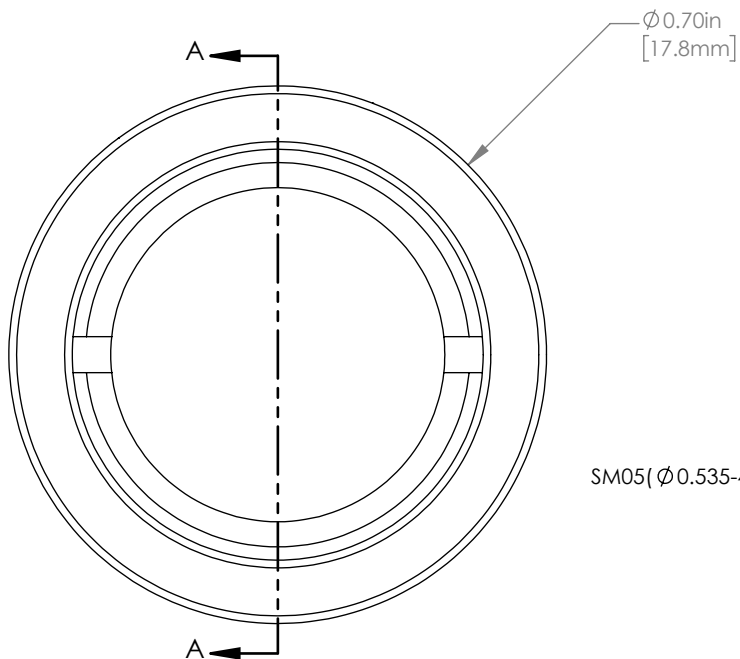
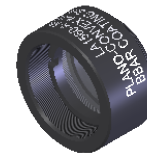


	PART DESCRIPTION	MATERIAL
①	SM05RR	ANODIZED ALUMINUM
②	LA1560-A	N-BK7
③	ENGRAVED HOUSING	ANODIZED ALUMINUM



NOTES/SPECIFICATIONS:

- DESIGN WAVELENGTH: 633nm
- FOCAL LENGTH: $f=25.0\text{mm} \pm 1\%$
- WORKING DISTANCE (REF): 19.9mm
- CLEAR APERTURE: $> \phi 11.4\text{mm}$
- SURFACE QUALITY: 40-20 SCRATCH-DIG
- COATING: BBAR $R_{\text{avg}} < 0.5\%$ FROM 350-700nm, AOI: 0°

FOR INFORMATION ONLY
NOT FOR MANUFACTURING PURPOSES

DRAWING PROJECTION				THORLABS www.thorlabs.com	
NAME	DATE			$\phi 1/2"$ MOUNTED PLANO CONVEX LENS, $f=25\text{mm}$, -A COAT	
DRAWN	GG	07/SEP/17			REV B
APPROVAL	DD	07/SEP/17	MATERIAL		SEE TABLE
COPYRIGHT © 2017 BY THORLABS					
VALUES IN PARENTHESIS ARE CALCULATED AND MAY CONTAIN ROUND OFF ERRORS					
ITEM #				APPROX WEIGHT	
LA1560-A-ML				4 g	