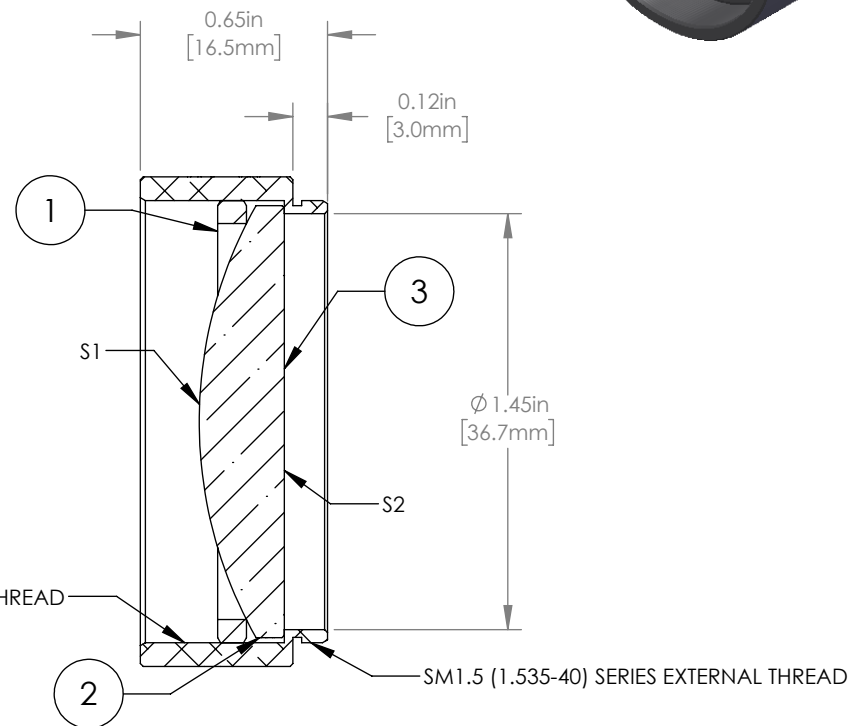
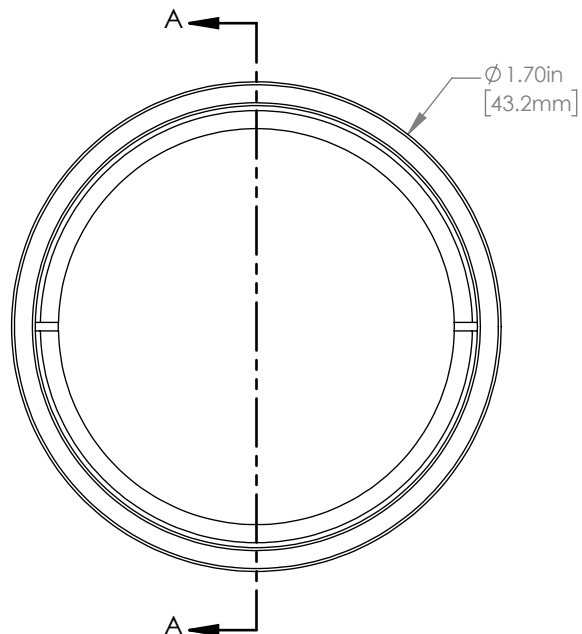


	PART DESCRIPTION	MATERIAL
①	SM1.5RR	ANODIZED ALUMINUM
②	LA1386	N-BK7
③	ENGRAVED HOUSING	ANODIZED ALUMINUM



SECTION A-A

NOTES/SPECIFICATIONS:

- DESIGN WAVELENGTH: 587.6 nm
- FOCAL LENGTH: $f=75.0\text{ mm} \pm 1\%$
- WORKING DISTANCE (REF): 67.1 mm
- CLEAR APERTURE: $>\phi 34.29\text{ mm}$
- SURFACE QUALITY: 40-20 SCRATCH-DIG

FOR INFORMATION ONLY
NOT FOR MANUFACTURING PURPOSES

DRAWING PROJECTION			THORLABS www.thorlabs.com	
NAME	DATE			
DRAWN	CP	19/NOV/19	MOUNTED $\phi 38.1\text{ mm}$ $f=75.0\text{ mm}$ N-BK7 PLANO CONVEX LENS	
APPROVAL	DD	19/NOV/19	MATERIAL	REV A
COPYRIGHT © 2020 BY THORLABS			SEE TABLE	
VALUES IN PARENTHESIS ARE CALCULATED AND MAY CONTAIN ROUND OFF ERRORS			ITEM #	APPROX WEIGHT
			LA1386-ML	26 g