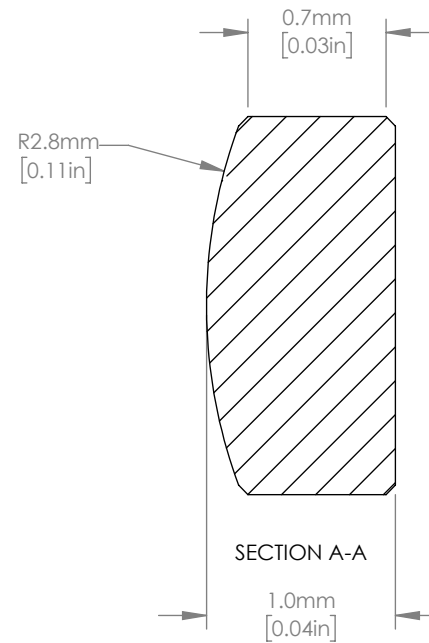
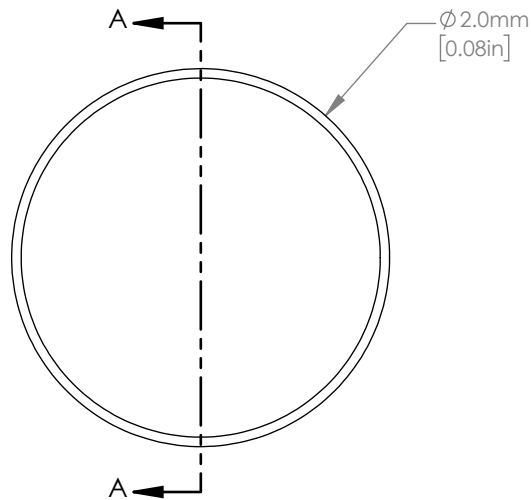


25:1 ISOMETRIC VIEW FOR REFERENCE ONLY



NOTES/SPECIFICATIONS:

1. DESIGN WAVELENGTH: 587.6nm
2. FOCAL LENGTH: $f=6.0\text{mm} \pm 1\%$
3. BACK FOCAL LENGTH (REF): $bf=5.31\text{mm}$
4. CLEAR APERTURE: $>1.8\text{mm}$
5. SURFACE QUALITY: 60-40 SCRATCH-DIG
6. CENTRATION: ≤ 5 arcmin
7. DIAMETER TOLERANCE: $+0.00/-0.02\text{mm}$
8. THICKNESS TOLERANCE: $\pm 0.03\text{mm}$

FOR INFORMATION ONLY
NOT FOR MANUFACTURING PURPOSES

DRAWING PROJECTION			THORLABS www.thorlabs.com	
NAME	DATE			
DRAWN	YB	24/JAN/19	$\varnothing 2\text{mm } f=6\text{mm}$ UV FUSED SILICA PLANO CONVEX LENS	
APPROVAL	NE	24/JAN/19	MATERIAL	REV
COPYRIGHT © 2019 BY THORLABS			UV FUSED SILICA	A
VALUES IN PARENTHESIS ARE CALCULATED AND MAY CONTAIN ROUND OFF ERRORS			ITEM # LA4026	APPROX WEIGHT 0.006 g