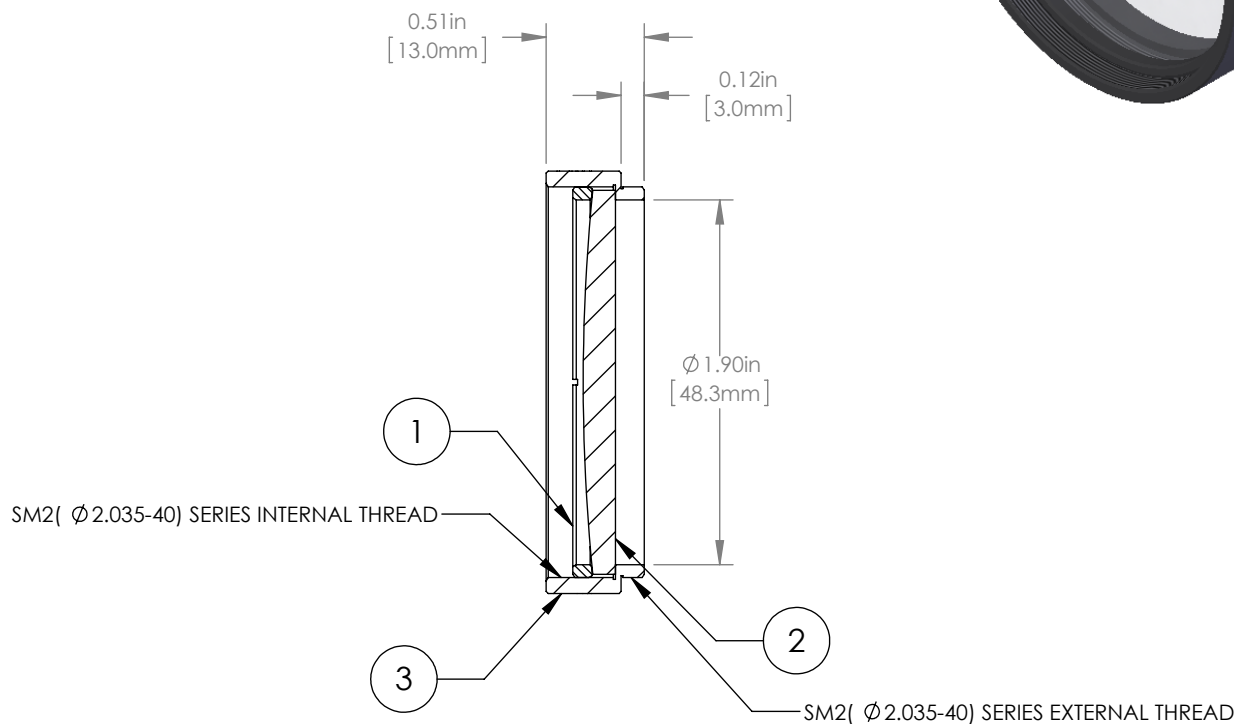
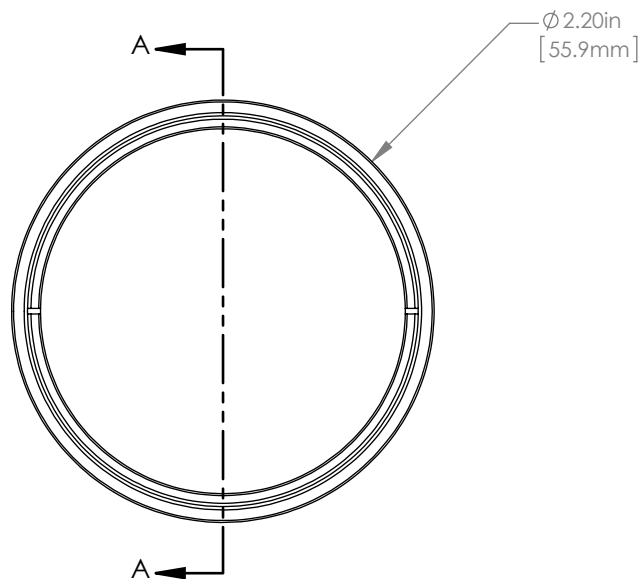


	PART DESCRIPTION	MATERIAL
①	SM2RR	ANODIZED ALUMINUM
②	LA1380-B	N-BK7
③	ENGRAVED HOUSING	ANODIZED ALUMINUM



NOTES/SPECIFICATIONS:

1. DESIGN WAVELENGTH: 633nm
2. FOCAL LENGTH:  $f=500.0\text{mm} \pm 1\%$
3. WORKING DISTANCE (REF): 493.4mm
4. CLEAR APERTURE:  $> \text{Ø} 45.72\text{mm}$
5. SURFACE QUALITY: 40-20 SCRATCH-DIG
6. COATING: BBAR  $R_{\text{avg}} < 0.5\%$  FROM 650-1050nm, AOI: 0°, ON OUTER OPTICAL SURFACES

FOR INFORMATION ONLY  
NOT FOR MANUFACTURING PURPOSES

DRAWING PROJECTION			<b>THORLABS</b> www.thorlabs.com <b>Ø 2" MOUNTED PLANO-CONVEX LENS, f=500mm, -B COAT</b>	
NAME	DATE			
DRAWN	GG	15/OCT/15	MATERIAL SEE TABLE ITEM # LA1380-B-ML APPROX WEIGHT 32 g	
APPROVAL	DD	15/OCT/15		
COPYRIGHT © 2015 BY THORLABS VALUES IN PARENTHESIS ARE CALCULATED AND MAY CONTAIN ROUND OFF ERRORS				