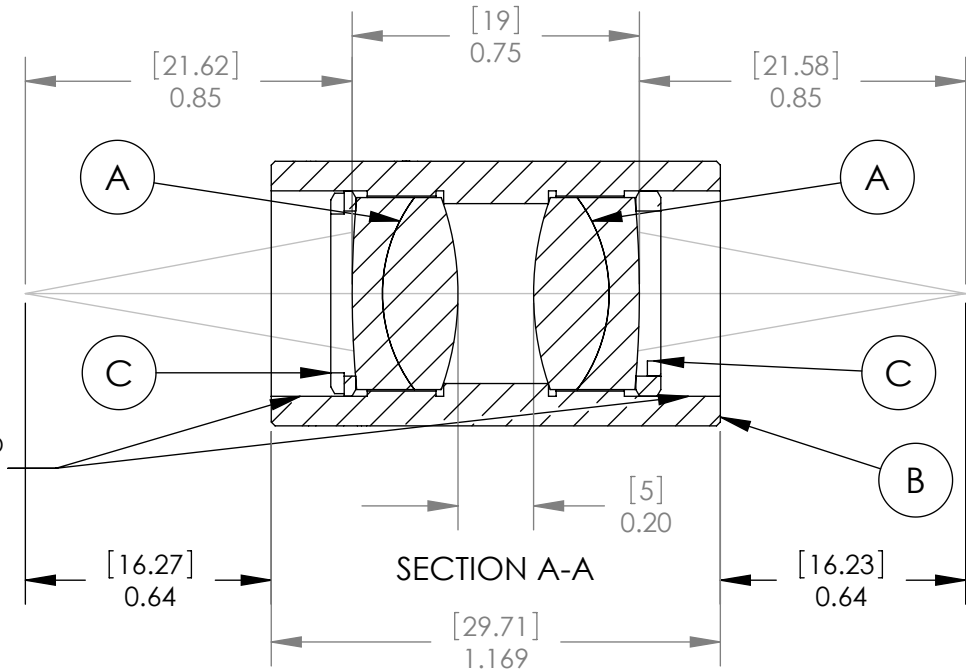
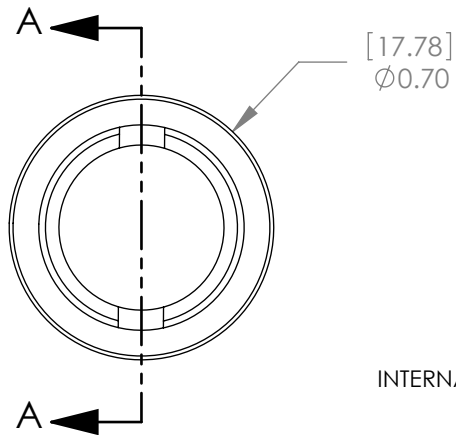


PART	PART NO.	MATERIAL
A	AC127-025-A1	BAF10-SF10
B	LENS MOUNT	6061-T6 ALUMINUM
C	SM05RR	6061-T6 ALUMINUM



**SPECIFICATIONS:**

DESIGN WAVELENGTH: 486.1, 587.6 & 656.3nm  
 COATING: BBAR 400-700nm  
 COATING RANGE: R(AVG)<0.5% FROM 400-700nm  
 MAGNIFICATION: 1:1

Dimensions are in  $\frac{[mm]}{in}$

NOTE:  
FOR INFORMATION ONLY. NOT INTENDED FOR MANUFACTURING.

**THORLABS INC.** PO BOX 366  
NEWTON NJ

	NAME	DATE
DRAWN	AP	04/14/06
ENG APPR.	TO	04/14/06
MFG APPR.	TO	04/14/06

**PROPRIETARY AND CONFIDENTIAL**

THE INFORMATION CONTAINED IN THIS DRAWING IS THE SOLE PROPERTY OF THORLABS, INC. ANY REPRODUCTION IN PART OR AS A WHOLE WITHOUT THE WRITTEN PERMISSION OF THORLABS, INC. IS PROHIBITED.

TITLE: MATCHED ACHROMAT PAIR  
F1=25mm, F2=25mm

MATERIAL: SEE TABLE SIZE A REV. C

SCALE: 1:1 SHEET 1 OF 1

DWG. NO. 13314-E01 PART NO. MAP052525-A1