

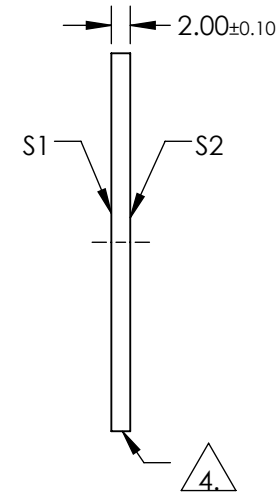
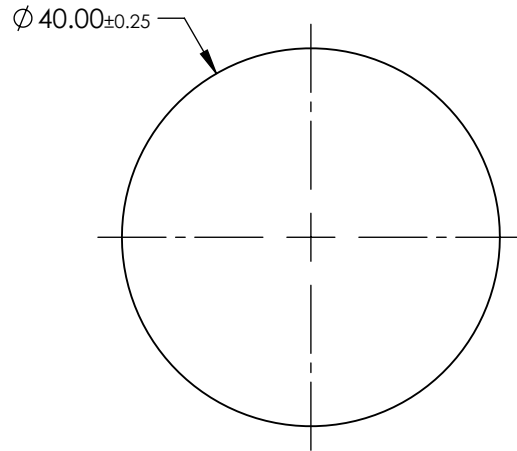
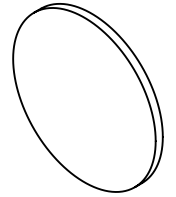
NOTES:

1. SUBSTRATE: OPTICAL GRADE SAPPHIRE (Al₂O₃)
2. SURFACE S2 TO BE PARALLEL TO SURFACE S1 TO WITHIN <3.5 ARCMIN
3. COATING (APPLY ACROSS COATING APERTURE):

S1 & S2: R(AVG) ≤ 0.25% @ 880nm
 R(AVG) ≤ 1.25% @ 400 - 870nm
 R(AVG) ≤ 1.25% @ 890 - 1000nm

 GRIND SURFACE

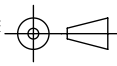
5. RoHS: COMPLIANT




**FOR INFORMATION ONLY:
 DO NOT MANUFACTURE
 PARTS TO THIS DRAWING**

SPECIFICATIONS SUBJECT TO CHANGE WITHOUT NOTICE
 DIMENSIONS ARE FOR REFERENCE ONLY

	S1	S2
SHAPE	PLANO	PLANO
SURFACE QUALITY	80-50	80-50
SURFACE FLATNESS @ 632.8nm	2λ	2λ
SURFACE ROUGHNESS (μm/in)	0.1	0.1
BIREFRINGENCE	0.008	0.008
CLEAR APERTURE	Ø36.00	Ø36.00
BEVEL	PROTECTIVE AS NEEDED	PROTECTIVE AS NEEDED

THIRD ANGLE PROJECTION 

ALL DIMS IN mm

 **Edmund Optics®**

TITLE Window Saph 40 Dia VIS-NIR Ctd

DWG NO 37703

SHEET 1 OF 1