

NOTES:

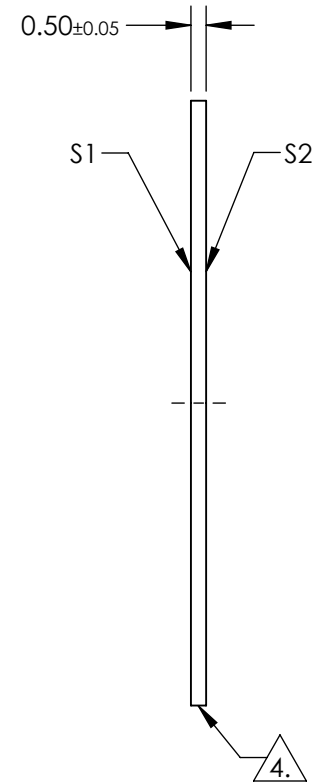
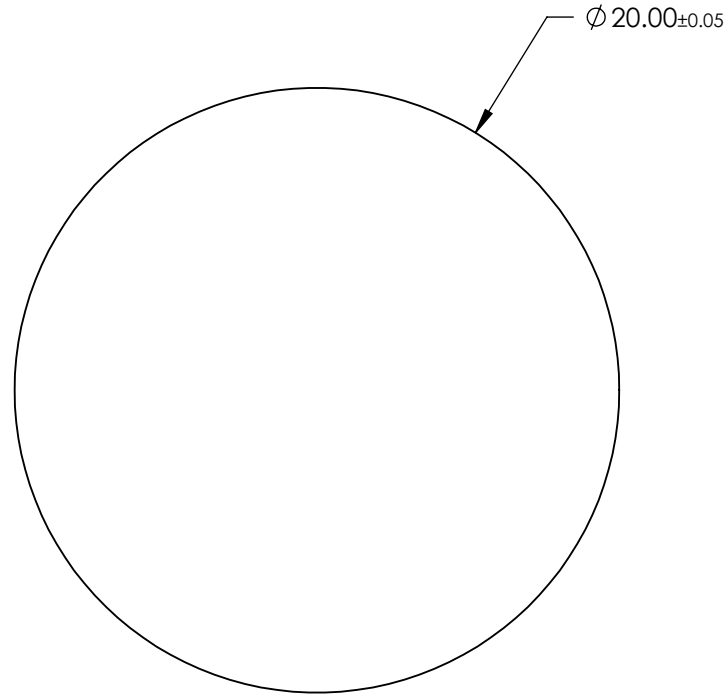
1. SUBSTRATE:
Sapphire (Al₂O₃)
2. SURFACE S2 TO BE PARALLEL WITH SURFACE S1 TO WITHIN ≤3.5 ARCMIN
3. COATING (APPLY ACROSS CLEAR APERTURE)

**FOR INFORMATION ONLY:
DO NOT MANUFACTURE
PARTS TO THIS DRAWING**

S1 & S2: NONE

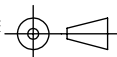
4. FINE GRIND SURFACE

5. ROHS COMPLIANT



SPECIFICATIONS SUBJECT TO CHANGE WITHOUT NOTICE
DIMENSIONS ARE FOR REFERENCE ONLY

REV. A	S1	S2
SHAPE	PLANO	PLANO
CLEAR APERTURE	$\phi 18$	$\phi 18$
SURFACE FLATNESS	2λ (typical)	2λ (typical)
SURFACE ROUGHNESS	$\leq 0.1 \mu\text{m PER INCH}$	$\leq 0.1 \mu\text{m PER INCH}$
SURFACE QUALITY	80-50	80-50
BIREFRINGENCE (no-ne)	0.008	0.008
BEVEL	PROTECTED AS NEEDED	PROTECTED AS NEEDED

THIRD ANGLE PROJECTION 

ALL DIMS IN mm

 **Edmund Optics®**

TITLE: 20mm Dia., 0.5mm Thick, Uncoated, Sapphire Window

DWG NO: 17227

SHEET 1 OF 1