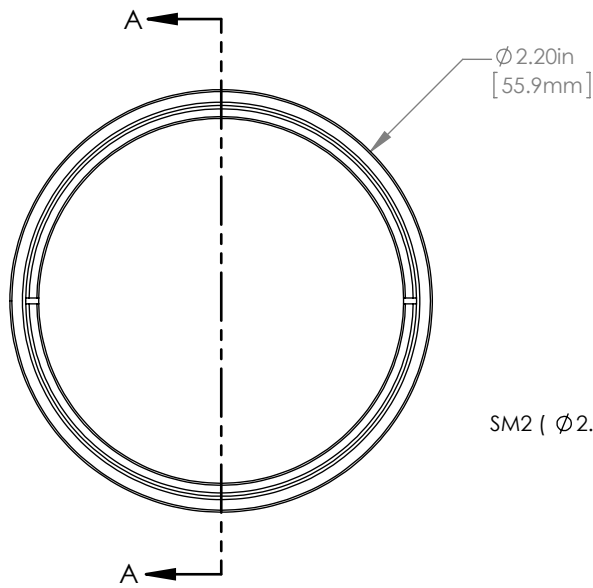
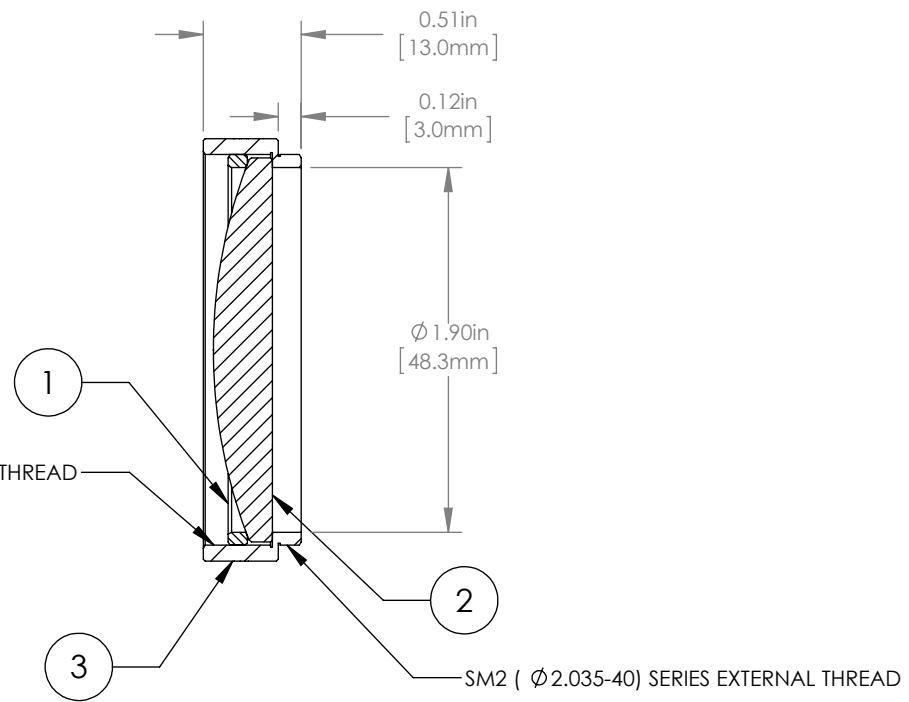


	PART DESCRIPTION	MATERIAL
①	SM2RR	ANODIZED ALUMINUM
②	LA4904-UV	UV FUSED SILICA
③	ENGRAVED HOUSING	ANODIZED ALUMINUM



SM2 (  $\phi$  2.035-40) SERIES INTERNAL THREAD



NOTES/SPECIFICATIONS:

1. DESIGN WAVELENGTH: 546nm
2. FOCAL LENGTH:  $f=150.0\text{mm} \pm 1\%$
3. WORKING DISTANCE (REF): 140.8mm
4. CLEAR APERTURE:  $> \phi 45.72\text{mm}$
5. SURFACE QUALITY: 40-20 SCRATCH-DIG
6. COATING: BBAR  $R_{\text{avg}} < 0.5\%$  FROM 245-400nm, AOI: 0°, ON OUTER OPTICAL SURFACES

FOR INFORMATION ONLY  
NOT FOR MANUFACTURING PURPOSES

DRAWING PROJECTION			<b>THORLABS</b> www.thorlabs.com $\phi$ 2" MOUNTED PLANO-CONVEX LENS, $f=150\text{mm}$ , -UV COAT	
NAME	DATE			
DRAWN	GG	08/FEB/16	MATERIAL	
APPROVAL	DD	08/FEB/16		
COPYRIGHT © 2016 BY THORLABS			SEE TABLE	REV B
VALUES IN PARENTHESIS ARE CALCULATED AND MAY CONTAIN ROUND OFF ERRORS			ITEM #	APPROX WEIGHT
			LA4904-UV-ML	38 g