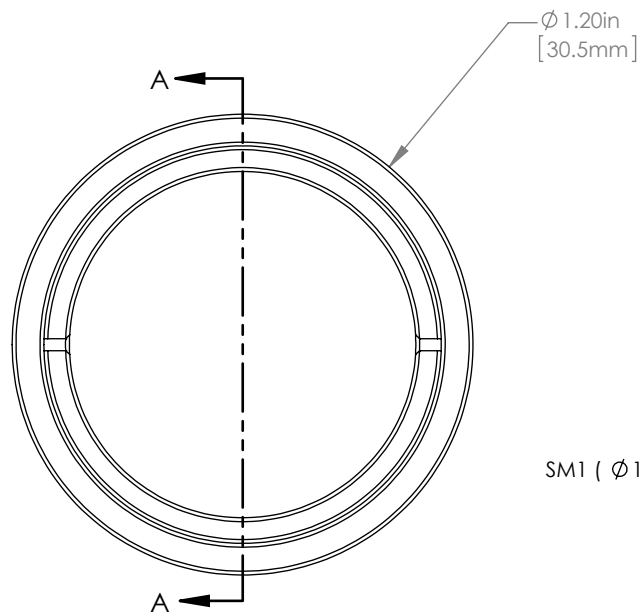
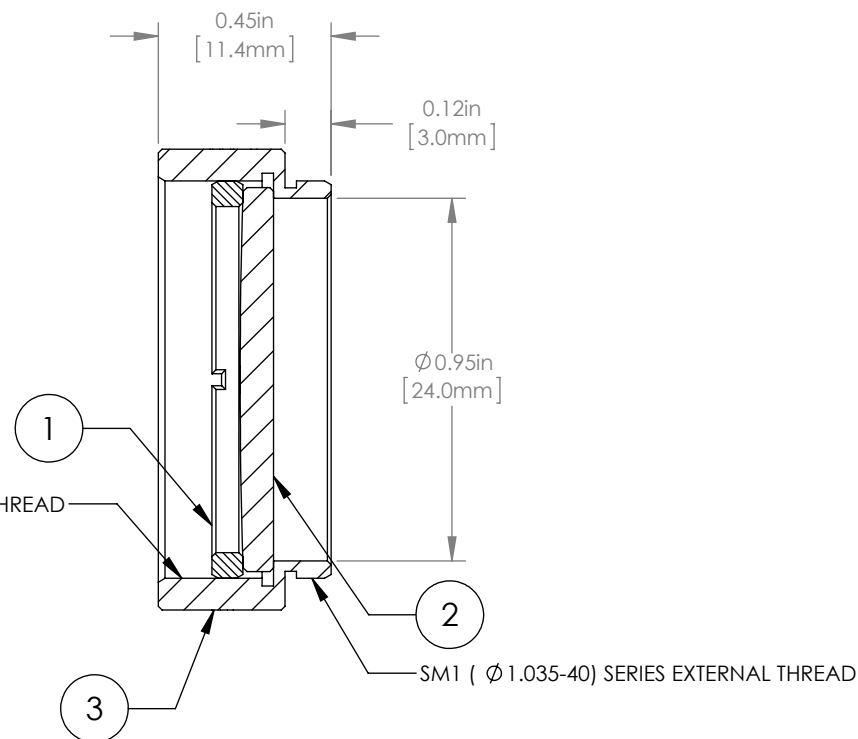


	PART DESCRIPTION	MATERIAL
①	SM1RR	ANODIZED ALUMINUM
②	LA4716-UV	UV FUSED SILICA
③	ENGRAVED HOUSING	ANODIZED ALUMINUM



SM1 ($\varnothing 1.035-40$) SERIES INTERNAL THREAD



NOTES/SPECIFICATIONS:

- DESIGN WAVELENGTH: 546nm
- FOCAL LENGTH: $f=750.0\text{mm} \pm 1\%$
- WORKING DISTANCE (REF): 744.7mm
- CLEAR APERTURE: $> \varnothing 22.86\text{mm}$
- SURFACE QUALITY: 40-20 SCRATCH-DIG
- COATING: BBAR $R_{\text{avg}} < 0.5\%$ FROM 245-400nm, AOI: 0°, ON OUTER OPTICAL SURFACES

FOR INFORMATION ONLY
NOT FOR MANUFACTURING PURPOSES

DRAWING PROJECTION						THORLABS www.thorlabs.com	
NAME	DATE	$\varnothing 1"$ MOUNTED PLANO-CONVEX LENS, $f=750\text{mm}$, -UV COAT				MATERIAL	REV
DRAWN	GG	13/OCT/15	SEE TABLE				A
APPROVAL	DD	13/OCT/15	ITEM #				APPROX WEIGHT
COPYRIGHT © 2015 BY THORLABS VALUES IN PARENTHESIS ARE CALCULATED AND MAY CONTAIN ROUND OFF ERRORS		LA4716-UV-ML				8 g	