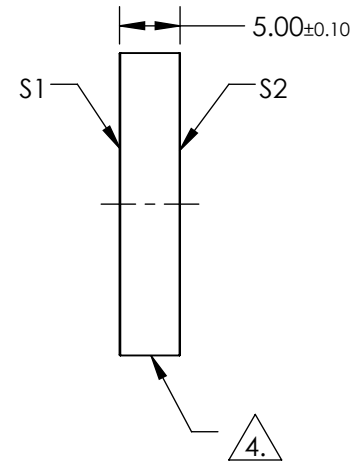
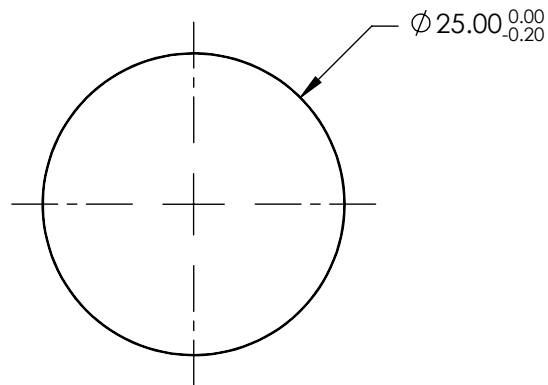


NOTES:

1. SUBSTRATE:  
UV GRADE FUSED SILICA
2. COATING (APPLY ACROSS COATING APERTURE):  
S1 & S2: NIR I (600-1050nm)  
R(AVG) ≤0.5% @ 600 - 1050nm
3. SURFACE S2 TO BE PARALLEL TO SURFACE S1 TO WITHIN <5 ARCSEC
4. FINE GRIND SURFACE
5. ROHS COMPLIANT

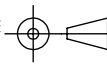


**FOR INFORMATION ONLY:  
DO NOT MANUFACTURE  
PARTS TO THIS DRAWING**

SPECIFICATIONS SUBJECT TO CHANGE WITHOUT NOTICE  
DIMENSIONS ARE FOR REFERENCE ONLY

**EO**® Edmund Optics®

	S1	S2
SHAPE	PLANO	PLANO
SURFACE QUALITY	20-10	20-10
CLEAR APERTURE	$\phi 20.00$	$\phi 20.00$
BEVEL	PROTECTIVE AS NEEDED	PROTECTIVE AS NEEDED

THIRD ANGLE PROJECTION 

ALL DIMS IN mm

TITLE	DWG NO	SHEET
25mm Dia., 5mm Thick, NIR I Coated $\lambda/10$ Fused Silica Window	11893	1 OF 1