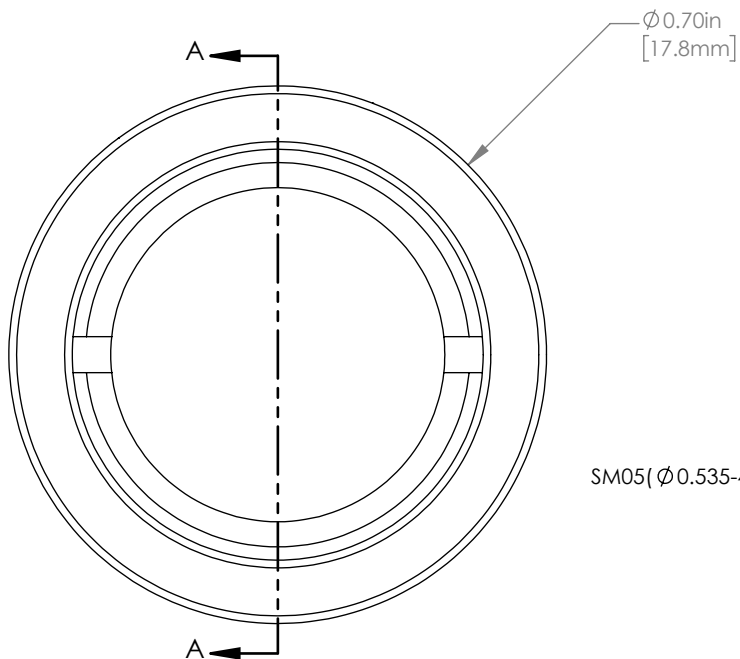
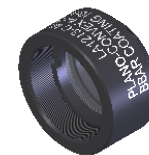
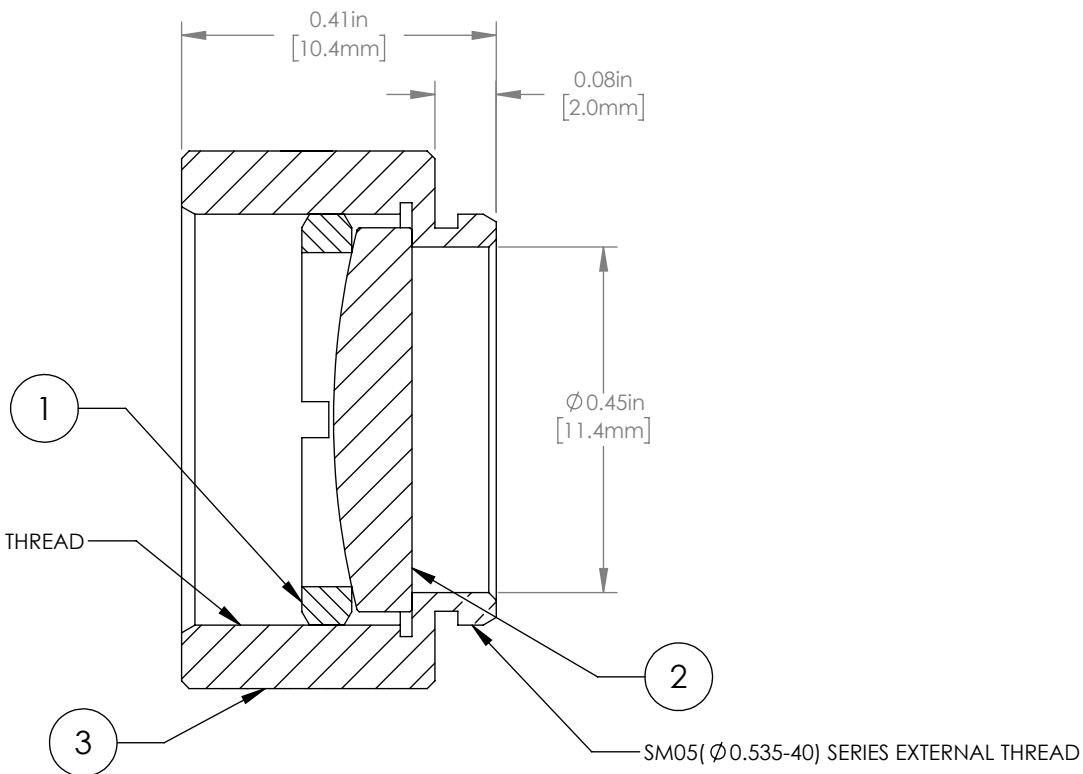


	PART DESCRIPTION	MATERIAL
①	SM05RR	ANODIZED ALUMINUM
②	LA1213-C	N-BK7
③	ENGRAVED HOUSING	ANODIZED ALUMINUM



$\varnothing 0.70\text{in}$   
[17.8mm]

SM05 ( $\varnothing 0.535-40$ ) SERIES INTERNAL THREAD



NOTES/SPECIFICATIONS:

- DESIGN WAVELENGTH: 587.6nm
- FOCAL LENGTH:  $f=49.8\text{mm} \pm 1\%$
- WORKING DISTANCE (REF): 45.3mm
- CLEAR APERTURE:  $> \varnothing 11.4\text{mm}$
- SURFACE QUALITY: 40-20 SCRATCH-DIG
- CENTRATION:  $< 3\text{arcmin}$
- COATING: BBAR  $R_{\text{avg}} < 0.5\%$  FROM 1050-1700nm, AOI:  $0^\circ$ ,

FOR INFORMATION ONLY  
NOT FOR MANUFACTURING PURPOSES

DRAWING PROJECTION					
	NAME	DATE	<b>THORLABS</b> www.thorlabs.com		
DRAWN	GG	07/SEP/17	$\varnothing 1/2$ " MOUNTED PLANO CONVEX LENS, $f=50\text{mm}$ , -C COAT		
APPROVAL	DD	07/SEP/17	MATERIAL	SEE TABLE	REV B
COPYRIGHT © 2017 BY THORLABS			ITEM #	APPROX WEIGHT	
VALUES IN PARENTHESIS ARE CALCULATED AND MAY CONTAIN ROUND OFF ERRORS			LA1213-C-ML	4 g	