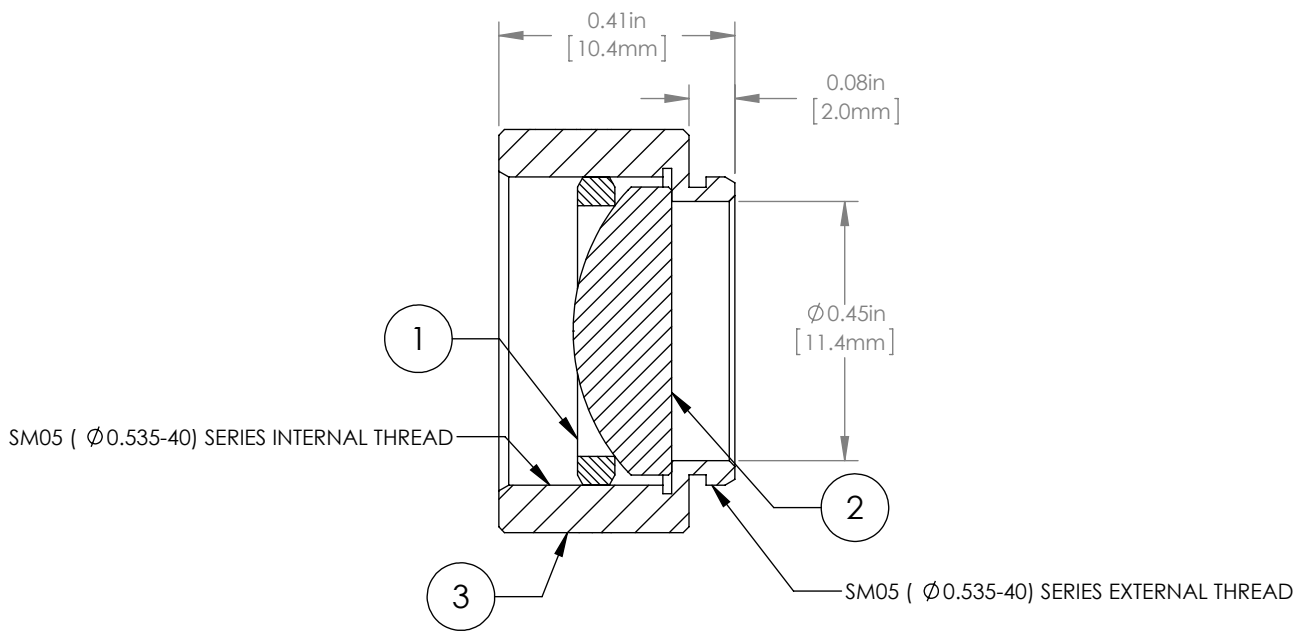
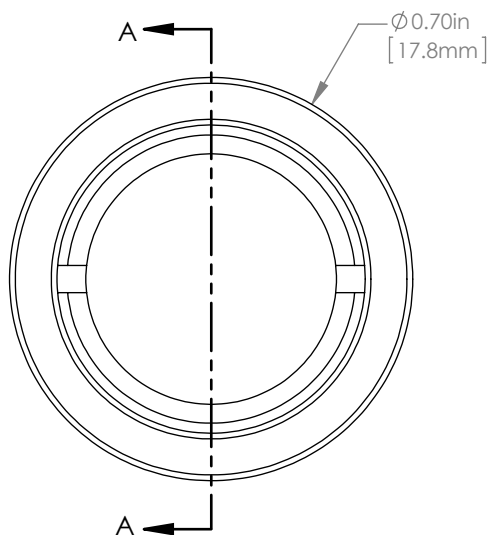
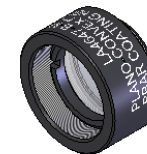


	PART DESCRIPTION	MATERIAL
①	SM05RR	ANODIZED ALUMINUM
②	LA4647-B	UV FUSED SILICA
③	ENGRAVED HOUSING	ANODIZED ALUMINUM



NOTES/SPECIFICATIONS:

- DESIGN WAVELENGTH: 546nm
- FOCAL LENGTH: $f=20.0\text{mm} \pm 1\%$
- WORKING DISTANCE (REF): 14.2mm
- CLEAR APERTURE: $> \text{Ø} 11.05\text{mm}$
- SURFACE QUALITY: 40-20 SCRATCH-DIG
- COATING: BBAR $R_{\text{avg}} < 0.5\%$ FROM 650-1050nm, AOI: 0°, ON OUTER OPTICAL SURFACES

FOR INFORMATION ONLY
NOT FOR MANUFACTURING PURPOSES

DRAWING PROJECTION						THORLABS www.thorlabs.com	
NAME	DATE	$\text{Ø} 1/2"$ MOUNTED PLANO-CONVEX LENS, $f=20\text{mm}$, -B COAT				MATERIAL	REV
DRAWN	GG	13/OCT/15	SEE TABLE				A
APPROVAL	DD	13/OCT/15	ITEM #				APPROX WEIGHT
COPYRIGHT © 2015 BY THORLABS <small>VALUES IN PARENTHESIS ARE CALCULATED AND MAY CONTAIN ROUND OFF ERRORS</small>				LA4647-B-ML		3 g	