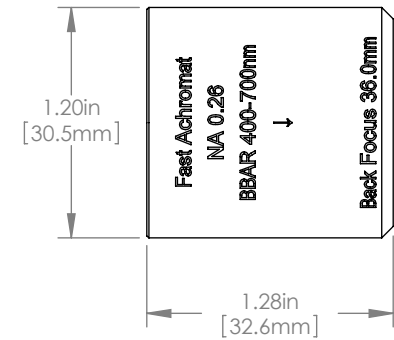
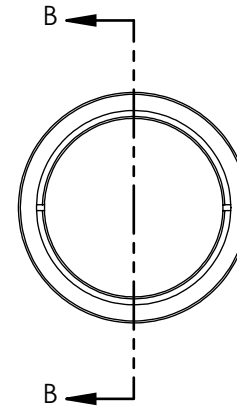
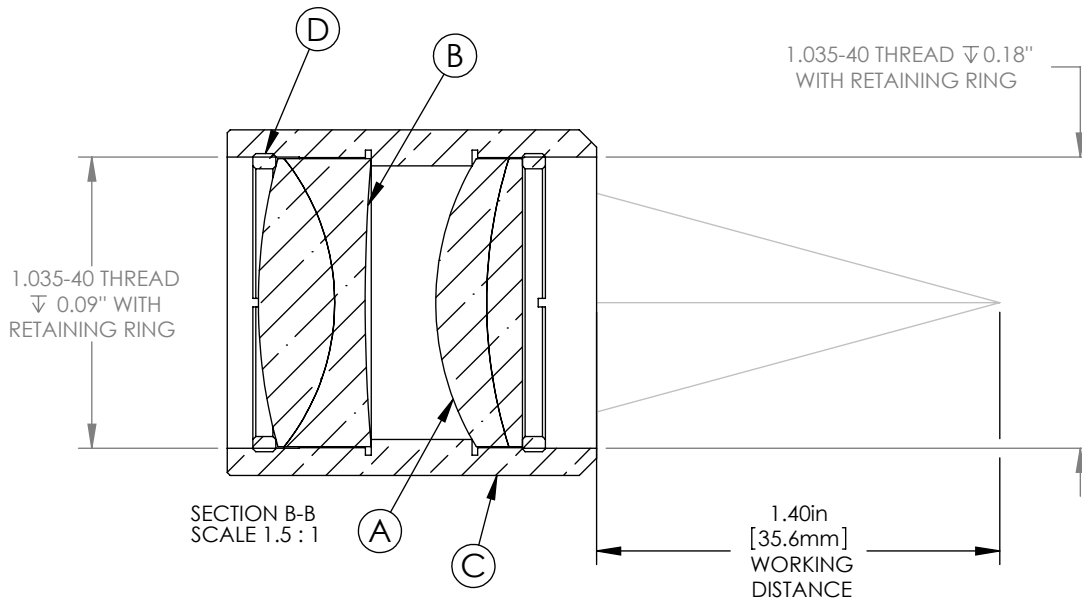
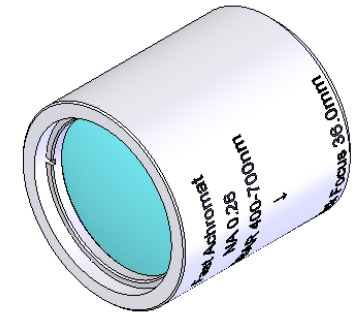


	ITEM	MATERIAL
(A)	DOUBLET 1	N-BK7 & N-SF2
(B)	DOUBLET 2	N-BK& & N-SF2
(C)	HOUSING	CHROME PLATED BRASS
(D)	RETAINING RING	CHROME PLATED BRASS

1:1 ISOMETRIC VIEW



NOTES/SPECIFICATIONS:

- DESIGN WAVELENGTHS: 486.1nm, 587.6nm, 656.3nm
- FOCAL LENGTH: 42.9mm
- NUMERICAL APERTURE: 0.26
- CLEAR APERTURE: 23.26mm
- COATING: BBAR $R_{avg} < 0.5\%$ FROM 400-700nm

FOR INFORMATION ONLY
NOT FOR MANUFACTURING PURPOSES

DRAWING PROJECTION		THORLABS www.thorlabs.com	
NAME	DATE	FAST ACHROMATIC DOUBLET PAIR f=42.9mm BBAR 400-700nm	
DRAWN	SFG	18/FEB/11	
APPROVAL	PM	23/FEB/11	
COPYRIGHT © 2011 BY THORLABS			
VALUES IN PARENTHESIS ARE CALCULATED AND MAY CONTAIN ROUND OFF ERRORS		MATERIAL	REV B
		SEE TABLE	
ITEM #	FAC1040-A	APPROX WEIGHT	0.08 kg