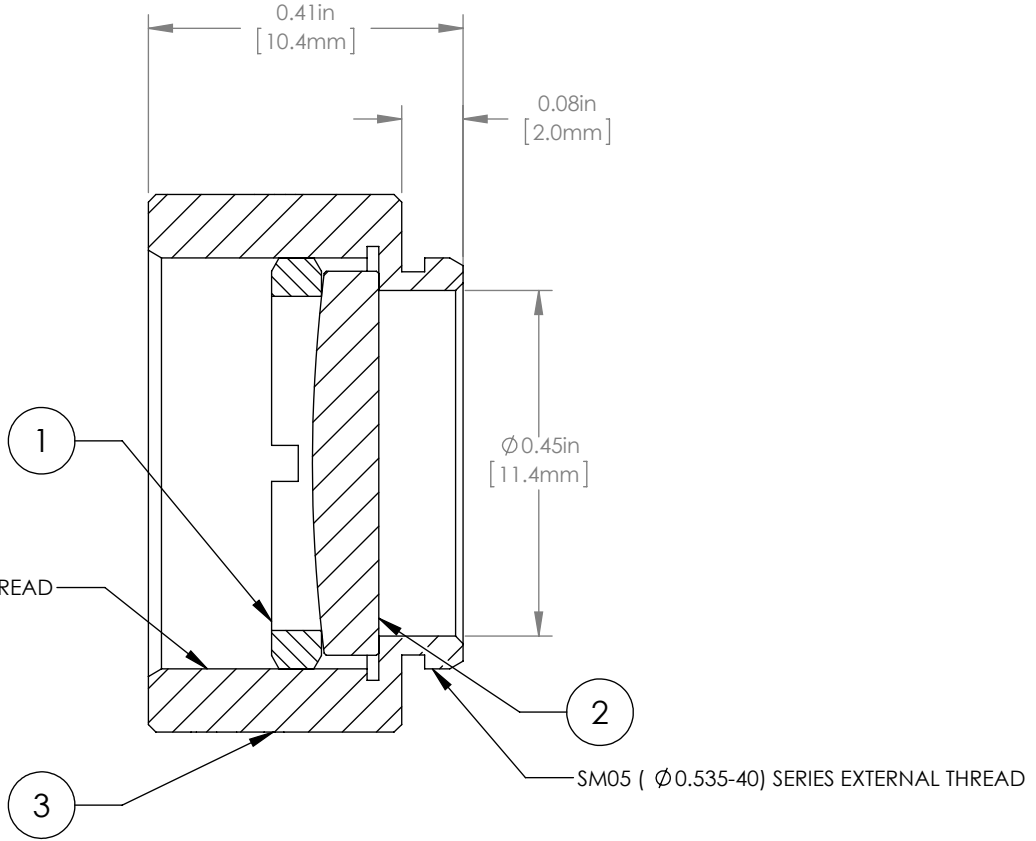
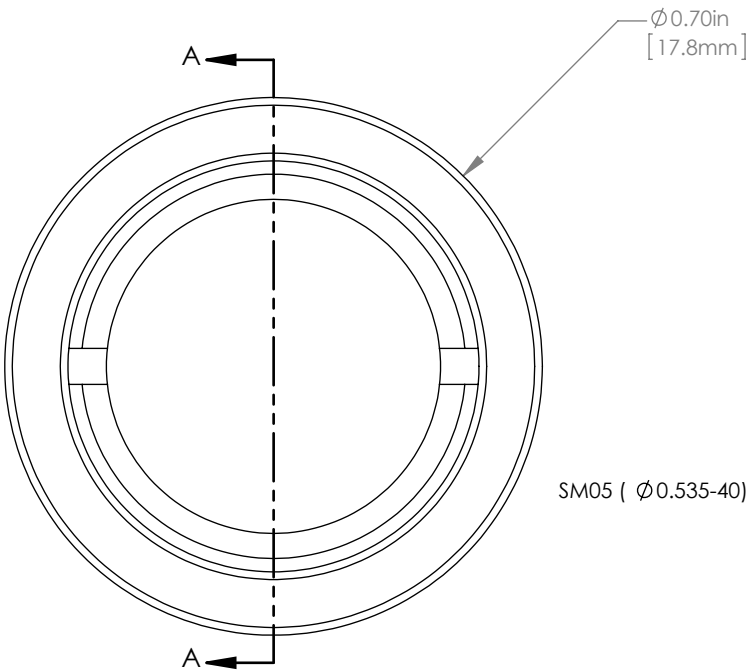




|   | PART DESCRIPTION | MATERIAL          |
|---|------------------|-------------------|
| ① | SM05RR           | ANODIZED ALUMINUM |
| ② | LA1207-C         | N-BK7             |
| ③ | ENGRAVED HOUSING | ANODIZED ALUMINUM |



NOTES/SPECIFICATIONS:

1. DESIGN WAVELENGTH: 587.6nm
2. FOCAL LENGTH:  $f=99.7\text{mm} \pm 1\%$
3. WORKING DISTANCE (REF): 95.4mm
4. CLEAR APERTURE:  $> \text{Ø} 11.05\text{mm}$
5. SURFACE QUALITY: 40-20 SCRATCH-DIG
6. CENTRATION:  $< 3\text{arcmin}$
7. COATING: BBAR  $R_{\text{avg}} < 0.5\%$  FROM 1050-1700nm, AOI:  $0^\circ$ , ON OUTER OPTICAL SURFACES

FOR INFORMATION ONLY  
NOT FOR MANUFACTURING PURPOSES

|  |      |           |   |               |
|--|------|-----------|---|---------------|
| DRAWING PROJECTION   |      |           | <br><a href="http://www.thorlabs.com">www.thorlabs.com</a><br><b>Ø 1/2" MOUNTED PLANO CONVEX LENS, f=100mm, -C COAT</b> |               |
| NAME   | DATE |           |   |               |
| DRAWN  | GG   | 30/JUN/15 | MATERIAL<br><b>SEE TABLE</b>  |               |
| APPROVAL   | DD   | 30/JUN/15 |   |               |
| COPYRIGHT © 2015 BY THORLABS<br><small>VALUES IN PARENTHESIS ARE CALCULATED AND MAY CONTAIN ROUND OFF ERRORS</small> |      |           | ITEM #  | APPROX WEIGHT |
|  |      |           | LA1207-C-ML   | 4 g           |