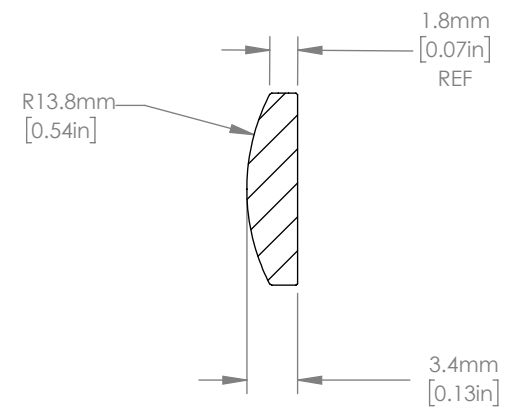
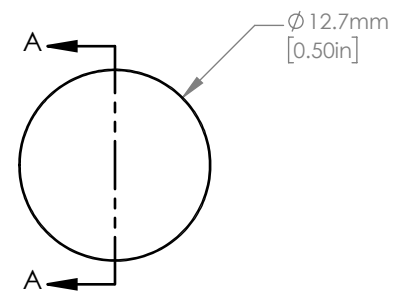




ISOMETRIC VIEW  
SCALE: 2:1



SECTION A-A

NOTES/SPECIFICATIONS:

1. DESIGN WAVELENGTH: 587.6 nm
2. FOCAL LENGTH:  $f=30.1 \text{ mm} \pm 1\%$
3. BACK FOCAL LENGTH(REF):  $bf=27.8 \text{ mm}$
4. CLEAR APERTURE:  $> \phi 11.43 \text{ mm}$
5. SURFACE QUALITY: 40-20 SCRATCH-DIG
6. CENTRATION:  $< 3 \text{ arcmin}$
7. DIAMETER TOLERANCE:  $+0.0/-0.1 \text{ mm}$
8. THICKNESS TOLERANCE:  $\pm 0.1 \text{ mm}$
9. COATING: BBAR  $R_{avg} < 0.5\%$  FROM 1050-1700 nm, AOI:  $0^\circ$

FOR INFORMATION ONLY  
NOT FOR MANUFACTURING PURPOSES

DRAWING PROJECTION			 <a href="http://www.thorlabs.com">www.thorlabs.com</a>	
NAME	DATE			
DRAWN	YB	16/NOV/21	$\phi 12.7 \text{ mm } f=30.1 \text{ mm}$ FUSED SILICA PLANO CONVEX LENS, -C COAT	
APPROVAL	DS	29/NOV/21	MATERIAL	REV
COPYRIGHT © 2021 BY THORLABS <small>VALUES IN PARENTHESIS ARE CALCULATED AND MAY CONTAIN ROUND OFF ERRORS</small>			UV FUSED SILICA	A
ITEM #		APPROX WEIGHT		
LA4936-C		0.72 g		