

NOTES:

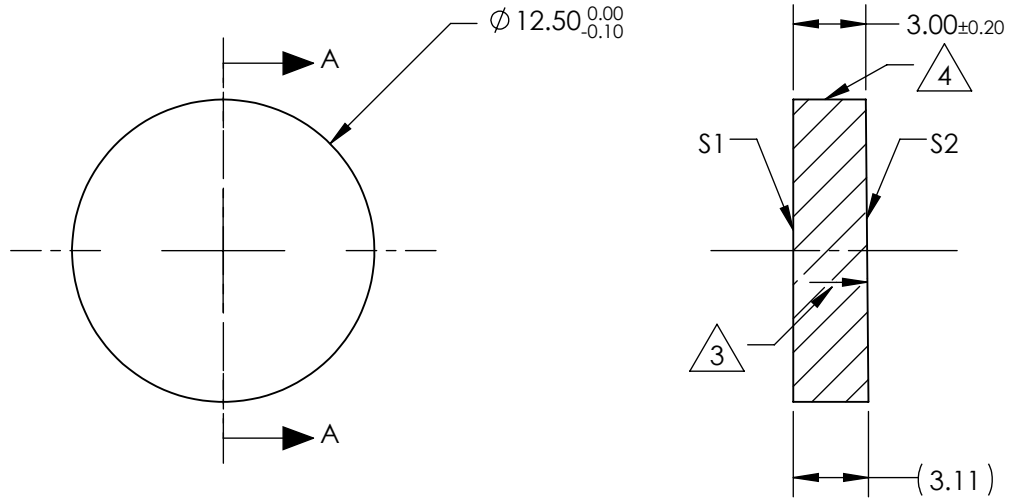
1. SUBSTRATE MATERIAL:
Fused Silica (Corning 7980)
2. COATING (APPLY ACROSS CLEAR APERTURE)
S1 & S2: Rabs ≤0.25% @ 880nm
Ravg ≤1.25% @ 400 - 870nm
Ravg ≤1.25% @ 890 - 1000nm

3. ARROW POINTS TOWARDS TILTED SURFACE

4. FINE GROUND SURFACE

5. POWER, IRREGULARITY, AND SURFACE QUALITY SPECIFICATIONS APPLY ACROSS CLEAR APERTURE

6. RoHS COMPLIANT



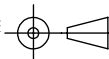
SECTION A-A

**FOR INFORMATION ONLY:
DO NOT MANUFACTURE
PARTS TO THIS DRAWING**

SPECIFICATIONS SUBJECT TO CHANGE WITHOUT NOTICE
DIMENSIONS ARE FOR REFERENCE ONLY

	S1	S2
SHAPE	PLANO	PLANO
RADIUS	∞	∞
MIN CLEAR APERTURE	Ø11.25	Ø11.25
SURFACE QUALITY	20-10	20-10
SURFACE ACCURACY	λ/10	λ/10
BEVEL	PROTECTIVE AS NEEDED	PROTECTIVE AS NEEDED

THIRD ANGLE PROJECTION



ALL DIMS IN

mm

EO® Edmund Optics®

TITLE	DWG NO	SHEET
12.5mm Dia., VIS-NIR Coated, Fused Silica Wedged Window	17666	1 OF 1