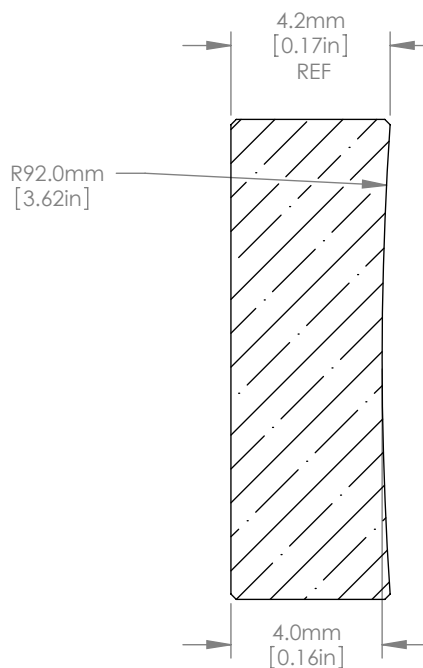
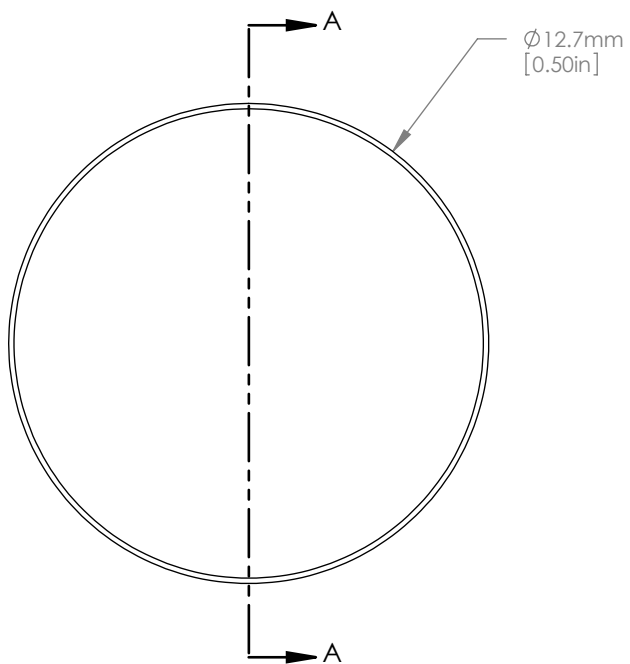




SCALE 1:1



NOTES/SPECIFICATIONS:

1. DESIGN WAVELENGTH: 588nm
2. FOCAL LENGTH: $f = -200.0\text{mm} \pm 1\%$
3. BACK FOCAL LENGTH(REF): $bf = -202.7\text{mm}$
4. CLEAR APERTURE: $>90\%$
5. SURFACE QUALITY: 40-20 SCRATCH-DIG
6. CENTRATION: $\leq 3\text{arcmin}$
7. DIAMETER TOLERANCE: $+0.0/-0.1\text{mm}$
8. THICKNESS TOLERANCE: $\pm 0.1\text{mm}$

FOR INFORMATION ONLY
NOT FOR MANUFACTURING PURPOSES

DRAWING PROJECTION

	NAME	DATE
DRAWN	GG	15/NOV/10
APPROVAL	JC	13/DEC/10

COPYRIGHT © 2010 BY THORLABS

VALUES IN PARENTHESIS ARE CALCULATED AND MAY CONTAIN ROUND OFF ERRORS

THORLABS
www.thorlabs.com

D=12.7mm F=-200.0mm UVFS
PLANO CONCAVE LENS

MATERIAL	UV GRADE FUSED SILICA	REV B
----------	-----------------------	-------

ITEM #	LC4918	APPROX WEIGHT	0.02 kg
--------	--------	---------------	---------