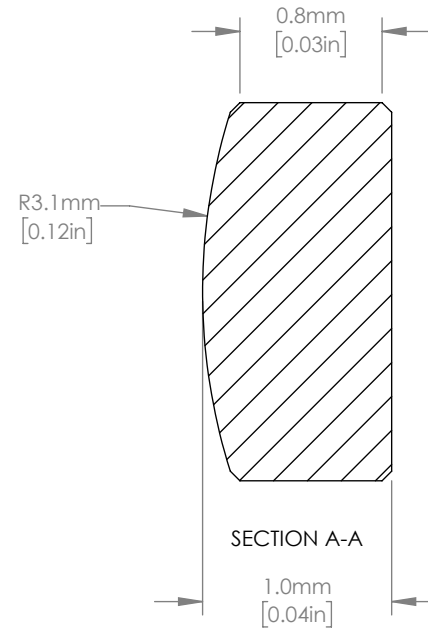
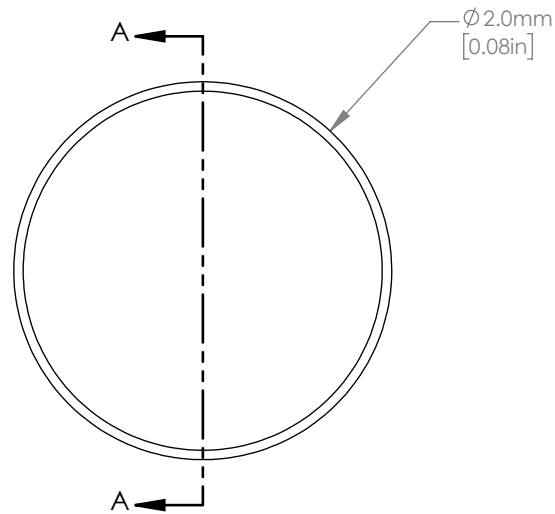


25:1 ISOMETRIC VIEW FOR REFERENCE ONLY



NOTES/SPECIFICATIONS:

1. DESIGN WAVELENGTH: 587.6nm
2. FOCAL LENGTH: $f=4.0\text{mm} \pm 1\%$
3. BACK FOCAL LENGTH (REF): $bf=3.44\text{mm}$
4. CLEAR APERTURE: $>1.8\text{mm}$
5. SURFACE QUALITY: 60-40 SCRATCH-DIG
6. CENTRATION: ≤ 5 arcmin
7. DIAMETER TOLERANCE: $+0.00/-0.02\text{mm}$
8. THICKNESS TOLERANCE: $\pm 0.03\text{mm}$
9. COATING: BBAR $R_{avg} < 0.5\%$ FROM 650-1050nm, AOI: 0°

FOR INFORMATION ONLY
NOT FOR MANUFACTURING PURPOSES

DRAWING PROJECTION			THORLABS www.thorlabs.com $\varnothing 2\text{mm } f=4\text{mm N-SF11}$ PLANO CONVEX LENS, -B COAT	
NAME	DATE			
DRAWN	YB	24/JAN/19	MATERIAL	
APPROVAL	NE	24/JAN/19	N-SF11	
COPYRIGHT © 2019 BY THORLABS VALUES IN PARENTHESIS ARE CALCULATED AND MAY CONTAIN ROUND OFF ERRORS			ITEM #	APPROX WEIGHT
			LA2024-B	0.009 g
				REV A