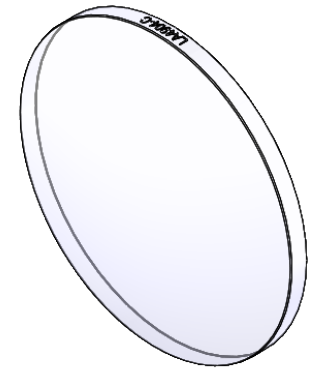


SECTION A-A



ISOMETRIC VIEW  
SCALE: 1:1

NOTES/SPECIFICATIONS:

1. DESIGN WAVELENGTH: 587.6 nm
2. FOCAL LENGTH:  $f=150.5\text{ mm} \pm 1\%$
3. BACK FOCAL LENGTH(REF):  $bf=145.2\text{ mm}$
4. CLEAR APERTURE:  $> \varnothing 45.72\text{ mm}$
5. SURFACE QUALITY: 40-20 SCRATCH-DIG
6. CENTRATION:  $<3\text{ arcmin}$
7. DIAMETER TOLERANCE:  $+0.0/-0.1\text{ mm}$
8. THICKNESS TOLERANCE:  $\pm 0.1\text{ mm}$
9. COATING: BBAR  $R_{avg} < 0.5\%$  FROM 1050-1700 nm, AOI:  $0^\circ$

FOR INFORMATION ONLY  
NOT FOR MANUFACTURING PURPOSES

DRAWING PROJECTION			<b>THORLABS</b> <a href="http://www.thorlabs.com">www.thorlabs.com</a>	
NAME	DATE			
DRAWN	YB	16/NOV/21	$\varnothing 50.8\text{ mm } f=150.5\text{ mm}$ FUSED SILICA PLANO CONVEX LENS, -C COAT	
APPROVAL	DS	29/NOV/21	MATERIAL	REV
COPYRIGHT © 2021 BY THORLABS <small>VALUES IN PARENTHESIS ARE CALCULATED AND MAY CONTAIN ROUND OFF ERRORS</small>			UV FUSED SILICA	A
			ITEM #	APPROX WEIGHT
			LA4904-C	24.33 g