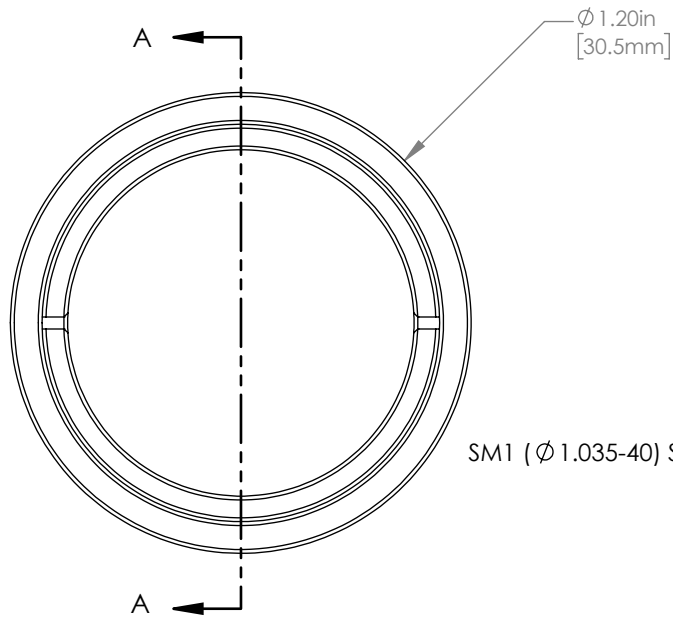
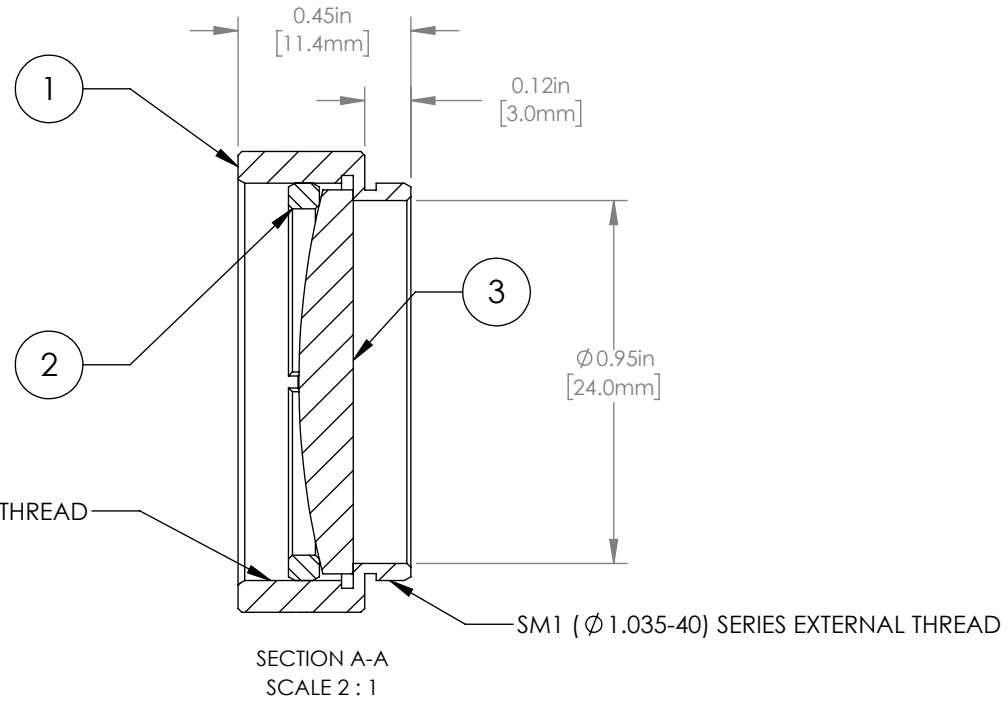


	PART DESCRIPTION	MATERIAL
①	ENGRAVED HOUSING	ANODIZED ALUMINUM
②	SM1RR	ANODIZED ALUMINUM
③	LA1509-B	N-BK7



SM1 ($\varnothing 1.035-40$) SERIES INTERNAL THREAD



NOTES/SPECIFICATIONS:

- DESIGN WAVELENGTH: 587.6 nm
- FOCAL LENGTH: $f=99.7\text{ mm} \pm 1\%$
- WORKING DISTANCE: 93.5 mm
- CLEAR APERTURE: $\varnothing 22.9\text{ mm}$
- SURFACE QUALITY: 40-20 SCRATCH-DIG
- COATING: BBAR 650-1050 nm, $R_{\text{avg}} < 0.5\%$, 0° AOI

FOR INFORMATION ONLY
 NOT FOR MANUFACTURING PURPOSES

DRAWING PROJECTION				THORLABS www.thorlabs.com	
NAME	DATE	MOUNTED $\varnothing 25.4\text{ mm}$, $f = 100.0\text{ mm}$ PLANO CONVEX LENS, B COATED			
DRAWN	GG	22/AUG/19	MATERIAL		
APPROVAL	DD	22/AUG/19	SEE TABLE		REV B
COPYRIGHT © 2019 BY THORLABS					
VALUES IN PARENTHESIS ARE CALCULATED AND MAY CONTAIN ROUND OFF ERRORS					
ITEM #			APPROX WEIGHT		
LA1509-B-ML			9 g		