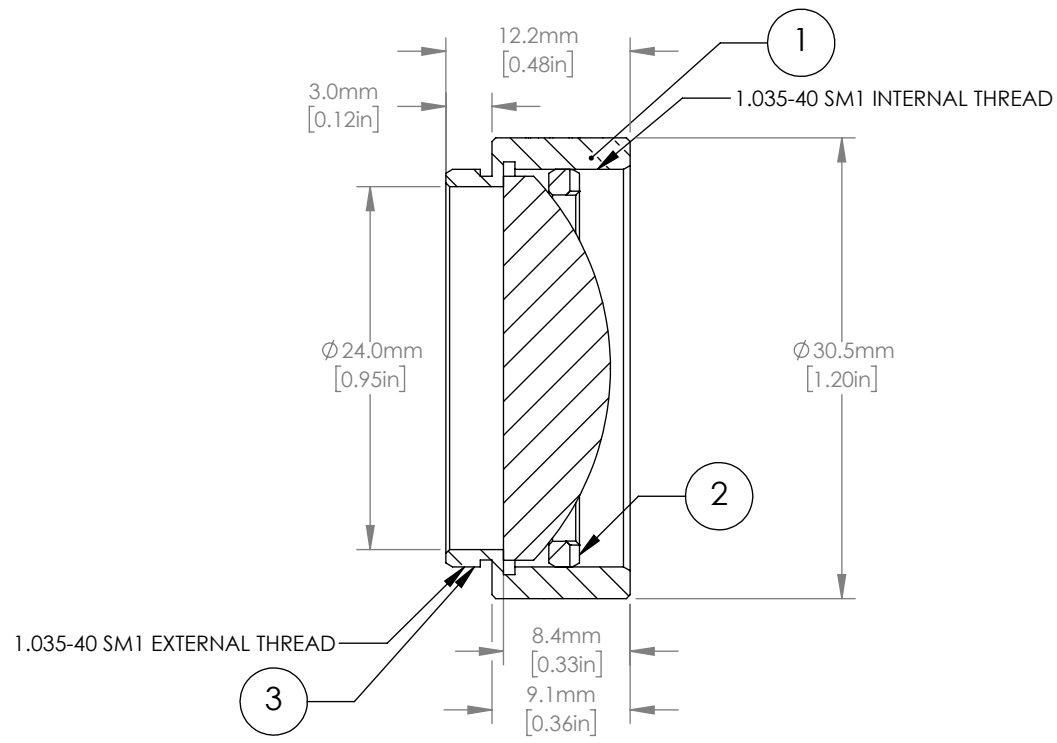
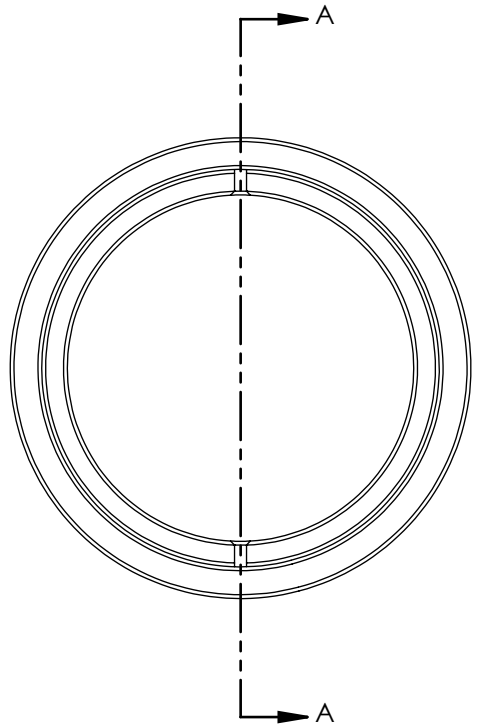


	PART DESCRIPTION	MATERIAL
①	ENGRAVED LENS TUBE	ANODIZED ALUMINUM
②	SM1RR	ANODIZED ALUMINUM
③	LA4306-UV	UV FUSED SILICA



SECTION A-A  
SCALE 2 : 1

- NOTES/SPECIFICATIONS:
- DESIGN WAVELENGTH: 587.6 nm
  - FOCAL LENGTH:  $f=40\text{ mm} \pm 1\%$
  - WORKING DISTANCE: 32.37 mm
  - CLEAR APERTURE: >90% OF LENS DIAMETER
  - SURFACE QUALITY: 40-20 SCRATCH-DIG
  - AR COATING: 245-400 nm  $R_{avg} < 0.5\%$  AT 0 AOI

FOR INFORMATION ONLY  
NOT FOR MANUFACTURING PURPOSES

DRAWING PROJECTION			<b>THORLABS</b> www.thorlabs.com f = 40.0 mm, Ø1", SM1-THREADED MOUNT, PLANO-CONVEX LENS, UV-COAT	
NAME	DATE			
DRAWN	DFS	06/NOV/20	MATERIAL	
APPROVAL	BW	12/NOV/20		
COPYRIGHT © 2020 BY THORLABS			SEE TABLE	REV B
VALUES IN PARENTHESIS ARE CALCULATED AND MAY CONTAIN ROUND OFF ERRORS			ITEM #	APPROX WEIGHT
			LA4306-UV-ML	0.030 kg