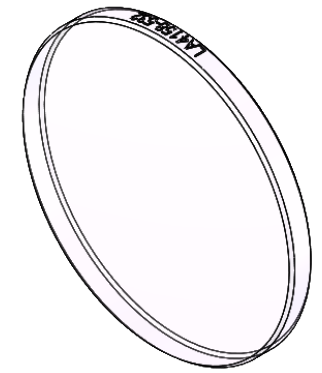


SECTION A-A



ISOMETRIC VIEW
SCALE: 2:1

NOTES/SPECIFICATIONS:

1. DESIGN WAVELENGTH: 587.6 nm
2. FOCAL LENGTH: $f=250.9\text{ mm} \pm 1\%$
3. BACK FOCAL LENGTH(REF): $bf=249.0\text{ mm}$
4. CLEAR APERTURE: $> \phi 22.86\text{ mm}$
5. SURFACE QUALITY: 20-10 SCRATCH-DIG
6. CENTRATION: $< 3\text{ arcmin}$
7. DIAMETER TOLERANCE: $+0.0/-0.1\text{ mm}$
8. THICKNESS TOLERANCE: $\pm 0.1\text{ mm}$
9. COATING: VAR R $<0.25\%$ PER SURFACE FOR 532 nm, AOI: 0°

FOR INFORMATION ONLY
NOT FOR MANUFACTURING PURPOSES

DRAWING PROJECTION			THORLABS www.thorlabs.com	
	NAME	DATE	$\phi 25.4\text{ mm } f=250\text{ mm}$ FUSED SILICA PLANO CONVEX LENS, -532 nm COAT	
DRAWN	YB	28/APR/20	MATERIAL	REV
APPROVAL	BW	25/MAY/20	UV FUSED SILICA	A
COPYRIGHT © 2020 BY THORLABS			ITEM #	APPROX WEIGHT
VALUES IN PARENTHESIS ARE CALCULATED AND MAY CONTAIN ROUND OFF ERRORS			LA4158-532	2.61 g