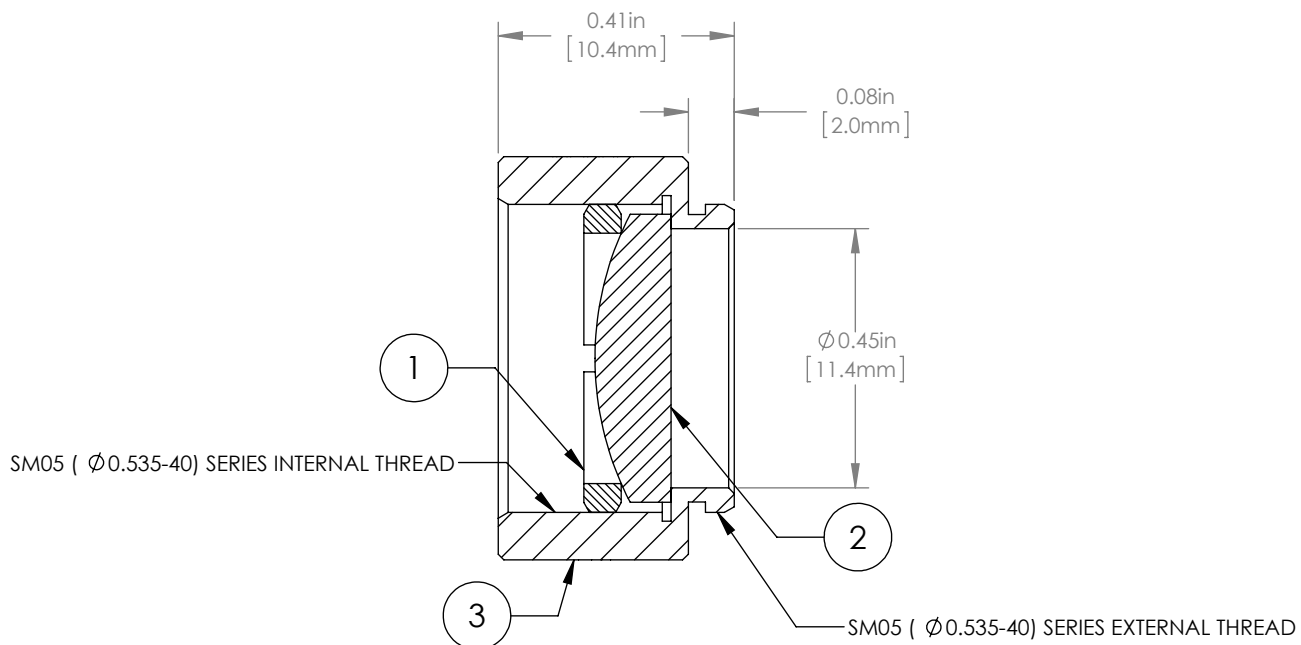
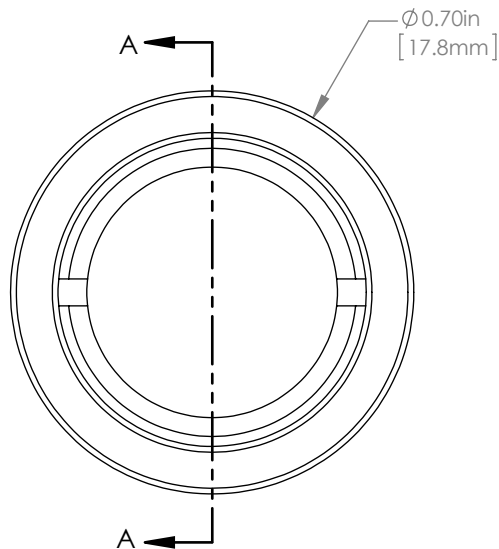


	PART DESCRIPTION	MATERIAL
①	SM05RR	ANODIZED ALUMINUM
②	LA4936	UV FUSED SILICA
③	ENGRAVED HOUSING	ANODIZED ALUMINUM



NOTES/SPECIFICATIONS:

1. DESIGN WAVELENGTH: 546nm
2. FOCAL LENGTH:  $f=30.0\text{mm} \pm 1\%$
3. WORKING DISTANCE (REF): 24.9mm
4. CLEAR APERTURE:  $> \text{Ø} 11.05\text{mm}$
5. SURFACE QUALITY: 40-20 SCRATCH-DIG

FOR INFORMATION ONLY  
NOT FOR MANUFACTURING PURPOSES

DRAWING PROJECTION			<b>THORLABS</b> www.thorlabs.com $\text{Ø} 1/2"$ MOUNTED PLANO-CONVEX LENS, $f=30\text{mm}$	
	NAME	DATE		
DRAWN	GG	13/OCT/15	MATERIAL <b>SEE TABLE</b>	
APPROVAL	DD	13/OCT/15		
COPYRIGHT © 2015 BY THORLABS			ITEM #	APPROX WEIGHT
VALUES IN PARENTHESIS ARE CALCULATED AND MAY CONTAIN ROUND OFF ERRORS			LA4936-ML	3 g
			REV	A