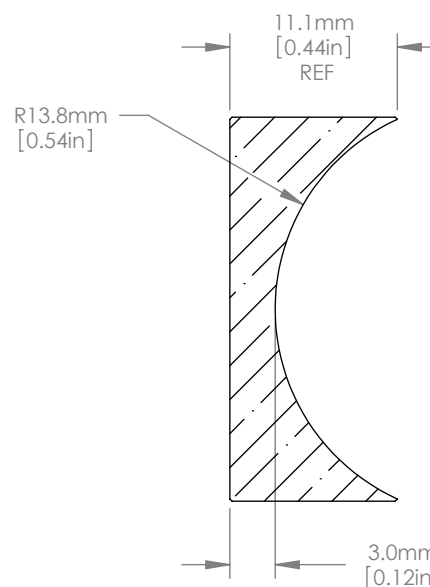
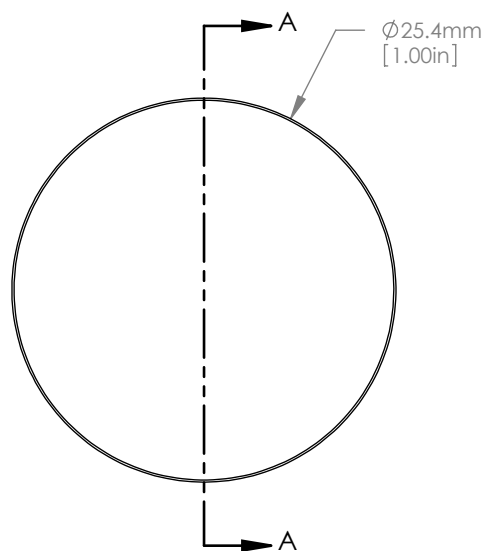


SCALE 1:1



NOTES/SPECIFICATIONS:

1. DESIGN WAVELENGTH: 588nm
2. FOCAL LENGTH:  $f = -30.0\text{mm} \pm 1\%$
3. BACK FOCAL LENGTH(REF):  $bf = -32.1\text{mm}$
4. CLEAR APERTURE:  $>90\%$
5. SURFACE QUALITY: 40-20 SCRATCH-DIG
6. CENTRATION:  $\leq 3\text{arcmin}$
7. DIAMETER TOLERANCE:  $+0.0/-0.1\text{mm}$
8. THICKNESS TOLERANCE:  $\pm 0.1\text{mm}$

FOR INFORMATION ONLY  
NOT FOR MANUFACTURING PURPOSES

DRAWING PROJECTION			<b>THORLABS</b> www.thorlabs.com <b>D=25.4mm F=-30.0mm UVFS          PLANO CONCAVE LENS</b>	
NAME	DATE			
DRAWN	GG	15/NOV/10	MATERIAL <b>UV GRADE FUSED SILICA</b>	
APPROVAL	JC	13/DEC/10		
COPYRIGHT © 2010 BY THORLABS VALUES IN PARENTHESIS ARE CALCULATED AND MAY CONTAIN ROUND OFF ERRORS			ITEM #	APPROX WEIGHT
			LC4252	0.02 kg