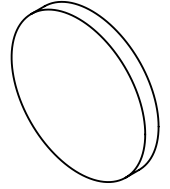
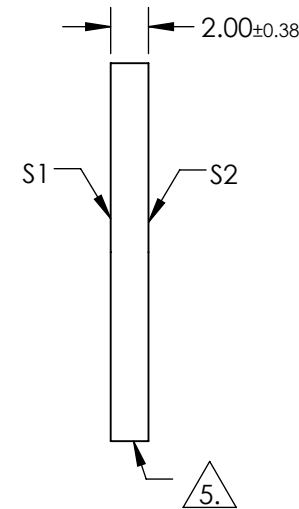
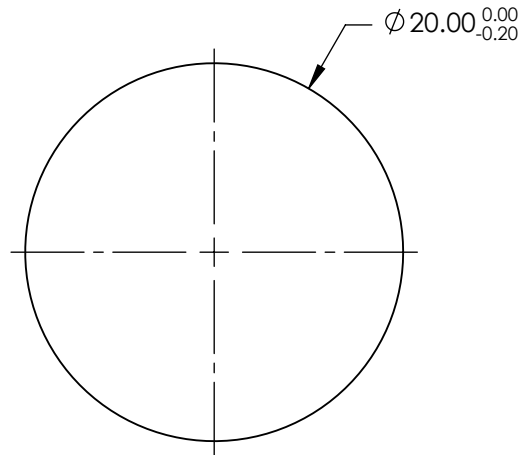


NOTES:

1. SUBSTRATE: FUSED SILICA
2. RoHS: COMPLIANT
3. SURFACE S2 TO BE PARALLEL TO SURFACE S1 TO WITHIN < 5 ARCMIN
4. COATING (APPLY ACROSS COATING APERTURE)  
 S1 & S2: 1/4 Wave MgF2 @ 550nm  
 R(AVG) < 1.75% FROM 400 - 700nm



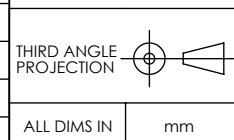
5. FINE GRIND SURFACE



**FOR INFORMATION ONLY:  
DO NOT MANUFACTURE  
PARTS TO THIS DRAWING**

SPECIFICATIONS SUBJECT TO CHANGE WITHOUT NOTICE  
DIMENSIONS ARE FOR REFERENCE ONLY

|                  | S1                   | S2                   |
|------------------|----------------------|----------------------|
| SHAPE            | PLANO                | PLANO                |
| SURFACE ACCURACY | 1λ                   | 1λ                   |
| SURFACE QUALITY  | 60-40                | 60-40                |
| CLEAR APERTURE   | Ø18.00               | Ø18.00               |
| BEVEL            | PROTECTIVE AS NEEDED | PROTECTIVE AS NEEDED |



**EO**® Edmund Optics®

|        |   |       |        |
|--------|---|-------|--------|
| TITLE  | 20mm DIA. MgF2 COATED, 1λ FUSED SILICA WINDOW |       |        |
| DWG NO | 11922   | SHEET | 1 OF 1 |