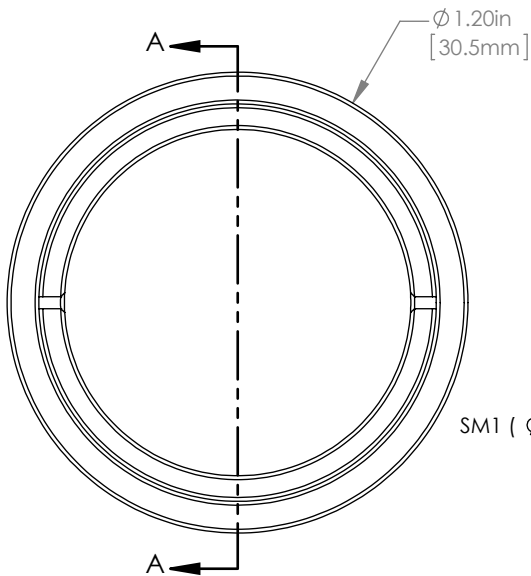
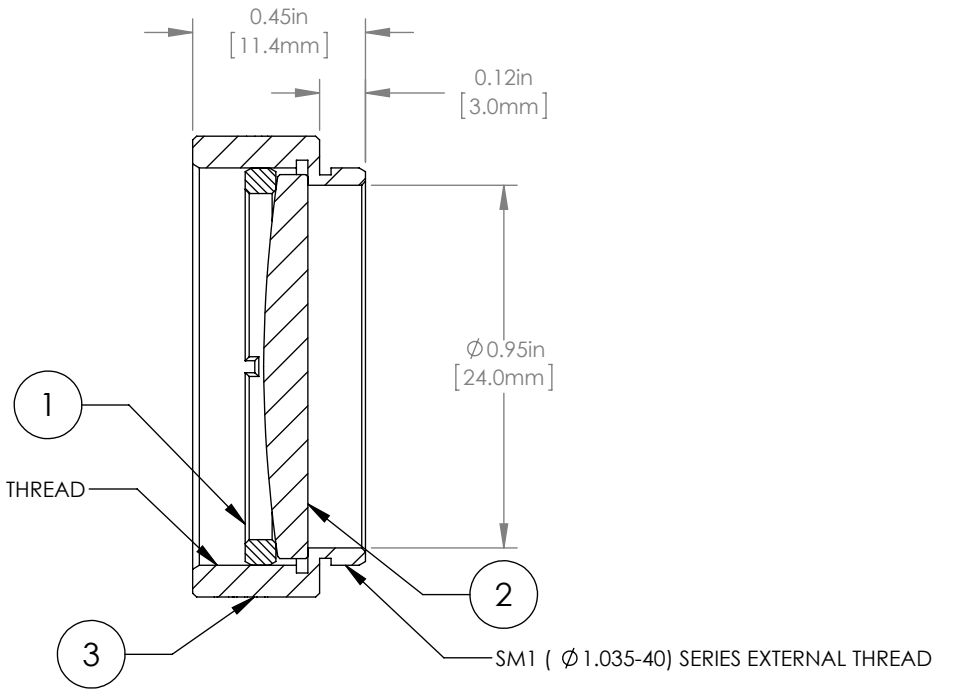


	PART DESCRIPTION	MATERIAL
①	SM1RR	ANODIZED ALUMINUM
②	LA4102-B	UV FUSED SILICA
③	ENGRAVED HOUSING	ANODIZED ALUMINUM



SM1 (  $\phi$  1.035-40) SERIES INTERNAL THREAD



SM1 (  $\phi$  1.035-40) SERIES EXTERNAL THREAD

NOTES/SPECIFICATIONS:

- DESIGN WAVELENGTH: 546nm
- FOCAL LENGTH:  $f=200.0\text{mm} \pm 1\%$
- WORKING DISTANCE (REF): 194.2mm
- CLEAR APERTURE:  $> \phi 22.86\text{mm}$
- SURFACE QUALITY: 40-20 SCRATCH-DIG
- COATING: BBAR  $R_{\text{avg}} < 0.5\%$  FROM 650-1050nm, AOI: 0°, ON OUTER OPTICAL SURFACES

FOR INFORMATION ONLY  
NOT FOR MANUFACTURING PURPOSES

DRAWING PROJECTION			<b>THORLABS</b> www.thorlabs.com $\phi$ 1" MOUNTED PLANO-CONVEX LENS, $f=200\text{mm}$ , -B COAT	
NAME	DATE			
DRAWN	GG	13/OCT/15	MATERIAL	
APPROVAL	DD	13/OCT/15		
COPYRIGHT © 2015 BY THORLABS			SEE TABLE	REV A
VALUES IN PARENTHESIS ARE CALCULATED AND MAY CONTAIN ROUND OFF ERRORS			ITEM #	APPROX WEIGHT
			LA4102-B-ML	9 g