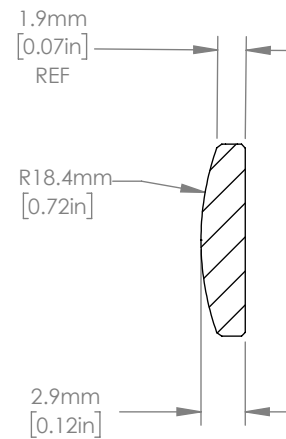
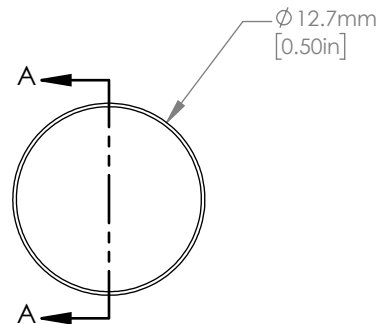


ISOMETRIC VIEW  
SCALE: 2:1



SECTION A-A

NOTES/SPECIFICATIONS:

1. DESIGN WAVELENGTH: 587.6 nm
2. FOCAL LENGTH:  $f=40.1 \text{ mm} \pm 1\%$
3. BACK FOCAL LENGTH(REF):  $bf=38.1 \text{ mm}$
4. CLEAR APERTURE:  $> \phi 11.43 \text{ mm}$
5. SURFACE QUALITY: 20-10 SCRATCH-DIG
6. CENTRATION:  $< 3 \text{ arcmin}$
7. DIAMETER TOLERANCE:  $+0.0/-0.1 \text{ mm}$
8. THICKNESS TOLERANCE:  $\pm 0.1 \text{ mm}$
9. COATING: VAR R<0.25% PER SURFACE FOR 1064 nm, AOI:  $0^\circ$

FOR INFORMATION ONLY  
NOT FOR MANUFACTURING PURPOSES

DRAWING PROJECTION			 <a href="http://www.thorlabs.com">www.thorlabs.com</a>	
	NAME	DATE		
DRAWN	YB	01/MAY/20	$\phi$ 12.7 mm $f=40$ mm FUSED SILICA PLANO CONVEX LENS, -1064 nm COAT	
APPROVAL	DM	01/MAY/20		
COPYRIGHT © 2020 BY THORLABS			MATERIAL UV FUSED SILICA	
VALUES IN PARENTHESIS ARE CALCULATED AND MAY CONTAIN ROUND OFF ERRORS			ITEM # LA4130-1064	APPROX WEIGHT 0.58 g
			REV	A