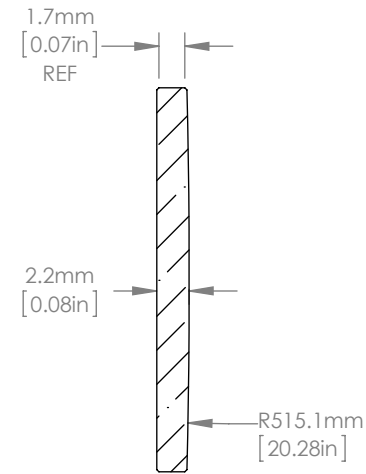
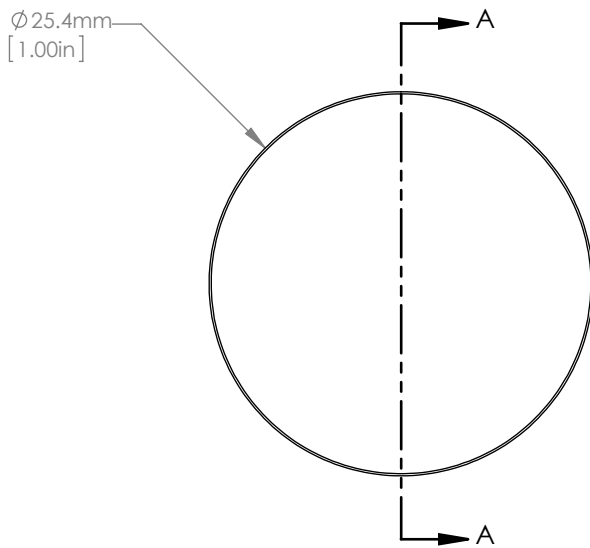


ISOMETRIC VIEW
SCALE: 1:1



SECTION A-A
SCALE 2:1

NOTES/SPECIFICATIONS:

1. DESIGN WAVELENGTH: 587.6nm
2. FOCAL LENGTH: $f=996.68\text{mm} \pm 1\%$
3. BACK FOCAL LENGTH(REF): $bf=995.26\text{mm}$
4. CLEAR APERTURE: $>90\%$
5. SURFACE QUALITY: 20-10 SCRATCH-DIG
6. CENTRATION: $<3\text{arcmin}$
7. DIAMETER TOLERANCE: $+0.0/-0.1\text{mm}$
8. THICKNESS TOLERANCE: $\pm 0.1\text{mm}$
9. COATING: VAR R $<0.25\%$ PER SURFACE FOR 780nm

FOR INFORMATION ONLY
NOT FOR MANUFACTURING PURPOSES

DRAWING PROJECTION			 www.thorlabs.com N-BK7 PLANO-CONVEX LENS D=25.4mm, f=1000.0mm, ARC: 780nm	
NAME	DATE			
DRAWN	RJ	03/JAN/11	MATERIAL	
APPROVAL	DD	05/JAN/11	N-BK7	REV B
COPYRIGHT © 2010 BY THORLABS VALUES IN PARENTHESIS ARE CALCULATED AND MAY CONTAIN ROUND OFF ERRORS			ITEM #	APPROX WEIGHT
			LA1464-780	0.03 kg